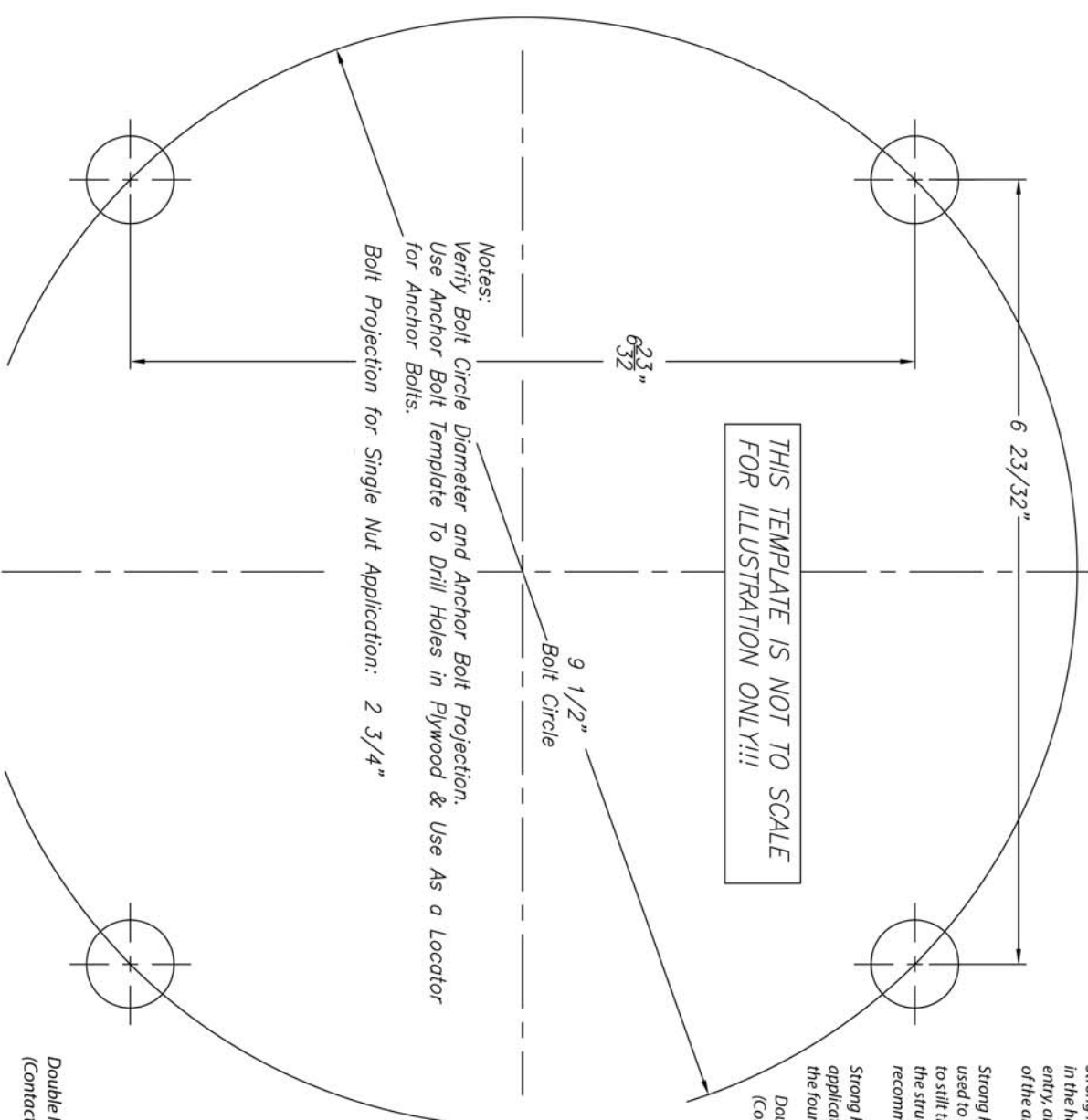


NO.	REVISIONS	DATE



TITLE 12' SteadyMax Series Pole	
Part # SP-SM12FL	
SCALE	DATE
BY	DWG. NO.
CHK'D	



Attention: Contractor/Installer
 Strong Poles includes a flat-washer and lock-washer for each anchor bolt shipped in the hardware kit along with the pole. When requested at time of order entry, an extra hex nut and flat washer can be ordered to assist in the placement of the anchor bolts using a plywood template.

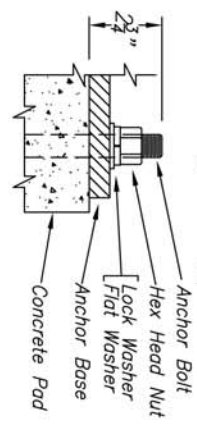
Strong Poles does not intend nor recommend that the extra nut and washer be used to support the pole. If improperly executed, using the extra nut and washer to stiff the pole base on the anchor bolts with the leveling nut can compromise the structural integrity of the pole base which may induce fatigue. Strong Poles recommends leveling shims (Part # SP-LEVEL-001) in lieu of leveling nuts.

Strong Poles standard base covers are intended to be used with single nut applications only. If used with leveling nuts, a gap could be created between the foundation and cover.

Double Nut leveling system is not recommended. Use leveling shims instead. (Contact Strong Poles if double leveling nuts must be used.)

Notes:
 Verify Bolt Circle Diameter and Anchor Bolt Projection.
 Use Anchor Bolt Template To Drill Holes in Plywood & Use As a Locator for Anchor Bolts.
 Bolt Projection for Single Nut Application: 2 3/4"

Bolt Projection for Single Nut Application: 2 3/4"



Double Nut leveling system is not recommended. Use leveling shims instead. (Contact Strong Poles if double leveling nuts must be used.)

NO.	REVISIONS	DATE

	TITLE 9 1/2" Dia. BC - For (4) Bolt Base	
	CUSTOMER	
	SCALE NTS	DATE 06/14/2010
	BY PM	DWG. NO.
CHK'D		