

Pole Designed per AASHTO 2013 Specifications For A 120 mph Maximum Wind Speed When Supporting A Maximum Design Loading Of (3) .7 sq. ft. EPA And 20 lb. Cameras, Along With An Additional Loading Of (1) 14" x 18" x 20 lb. Power Supply Cabinet, Mounted On Strong's "Birdhouse" Adapter (8" x 12" & 15 lbs.). Pole Base Mounted No Higher Than 2'-0" Above Grade, And Combined Wind And Dead Load Deflection Limited To 3% Of Pole Height.

The Combined Maximum Design Loading for This Pole Assembly per AASHTO 2013 Specifications For A 150 mph Wind Speed, And Considering A Maximum Wind And Dead Load Deflection Of 3% Of Pole Height, Is 3.2 sq. ft. EPA And 80 lbs. Weight. Pole Base Mounted No Higher Than 2'-0" Above Grade.

Notes:

1. Approximate Pole Assembly Weight: 65 lbs.
2. Maximum Combined Moment At Base: 6560 ft. lbs.
3. Maximum Combined Shear At Base: 454 lbs.

(2) Internal Impact Style Dampers (Factory Installed)

6" Dia. Aluminum Tube
.156" Wall Alloy 6063-T6
Standard Powder Coat Finish

- (4) 3/4"-10NC Galv. Stl. Anchor Bolts, AASHTO M314-90 Grade 55, 10" Of Threaded End Galv. Per ASTM A153.
- (4) 3/4"-10NC Galv. Stl. Hex. Nuts
- (4) 3/4" Galv. Stl. Lockwashers
- (4) 3/4" Galv. Stl. Flatwashers

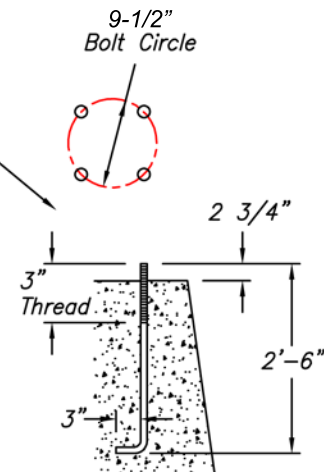
Ground Lug Opposite Handhole

Reinforced Handhole (3" x 5") With Cover And Stainless Steel Hex. Hd. Screws

Base Flange Alloy 356-T6 With Bolt Covers And Stainless Steel Hex. Hd. Screws

Label Per 38119-001 Part No. 37650, And Manufacture Date

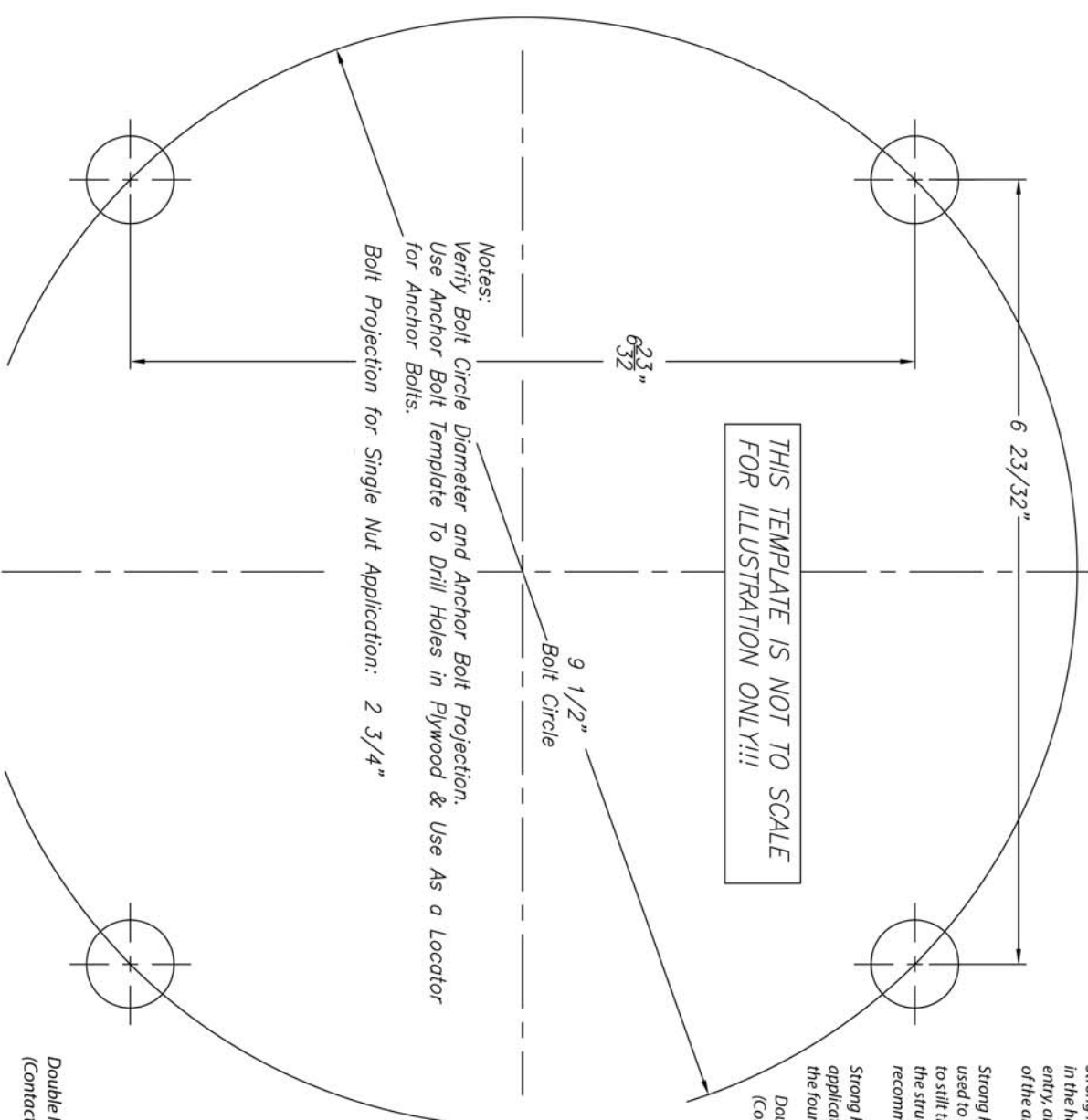
9 3/4" Sq.



NO.	REVISIONS	DATE



TITLE 16' SteadyMax Series Pole	
Part # SP-SM16	
SCALE	DATE
BY	DWG. NO.
CHK'D	



THIS TEMPLATE IS NOT TO SCALE FOR ILLUSTRATION ONLY!!!

Notes:
 Verify Bolt Circle Diameter and Anchor Bolt Projection.
 Use Anchor Bolt Template To Drill Holes in Plywood & Use As a Locator for Anchor Bolts.
 Bolt Projection for Single Nut Application: 2 3/4"

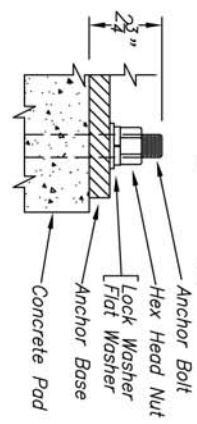
Attention: Contractor/Installer
 Strong Poles includes a flat-washer and lock-washer for each anchor bolt shipped in the hardware kit along with the pole. When requested at time of order entry, an extra hex nut and flat washer can be ordered to assist in the placement of the anchor bolts using a plywood template.

Strong Poles does not intend nor recommend that the extra nut and washer be used to support the pole. If improperly executed, using the extra nut and washer to stiff the pole base on the anchor bolts with the leveling nut can compromise the structural integrity of the pole base which may induce fatigue. Strong Poles recommends leveling shims (Part # SP-LEVEL-001) in lieu of leveling nuts.

Strong Poles standard base covers are intended to be used with single nut applications only. If used with leveling nuts, a gap could be created between the foundation and cover.

Double Nut leveling system is not recommended. Use leveling shims instead. (Contact Strong Poles if double leveling nuts must be used.)

Bolt Projection for Single Nut Application: 2 3/4"



Double Nut leveling system is not recommended. Use leveling shims instead. (Contact Strong Poles if double leveling nuts must be used.)

NO.	REVISIONS	DATE

	TITLE 9 1/2" Dia. BC - For (4) Bolt Base	
	CUSTOMER	
	SCALE NTS	DATE 06/14/2010
	BY PM	DWG. NO.
CHK'D		