

NO.	REVISIONS	DATE	TITLE 25' SteadyMax Series Pole	
			Part # SP-SM25	
			SCALE	DATE
			BY	DWG. NO.
			CHK'D	



**THIS TEMPLATE IS NOT TO SCALE
FOR ILLUSTRATION ONLY!!!**

1 1/2" Dia.
Bolt Circle

8 1/8"

8 1/8"

Notes:
Verify Bolt Circle Diameter and Anchor Bolt Projection.
Use Anchor Bolt Template To Drill Holes in Plywood & Use As a Locator
for Anchor Bolts.
Bolt Projection for Single Nut Application: 2 3/4"

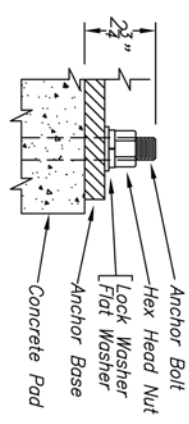
Attention: Contractor/Installer
Strong Poles includes a flat-washer and lock-washer for each anchor bolt shipped in the hardware kit along with the pole. When requested at time of order entry, an extra hex nut and flat washer can be ordered to assist in the placement of the anchor bolts using a plywood template.

Strong Poles does not intend nor recommend that the extra nut and washer be used to support the pole. If improperly executed, using the extra nut and washer to stilt the pole base on the anchor bolts with the leveling nut can compromise the structural integrity of the pole base which may induce fatigue. Strong Poles recommends leveling shims (Part # SP-LEVEL-001) in lieu of leveling nuts.

Strong Poles standard base covers are intended to be used with single nut applications only. If used with leveling nuts, a gap could be created between the foundation and cover.

Double Nut leveling system is not recommended. Use leveling shims instead.
(Contact Strong Poles if double leveling nuts must be used.)

Bolt Projection for Single Nut Application: 2 3/4"



Double Nut leveling system is not recommended. Use leveling shims instead.
(Contact Strong Poles if double leveling nuts must be used.)

Ref. B55008, Base 44207, 8" Dia. Lighting

NO.	REVISIONS	DATE

		TITLE 1 1/2" Dia. BC - For (4) Bolt Base	
		CUSTOMER	
SCALE NTS	DATE 06/14/2010	DWG. NO.	
BY PM			
CHK'D			