



Anchor basket Assembly



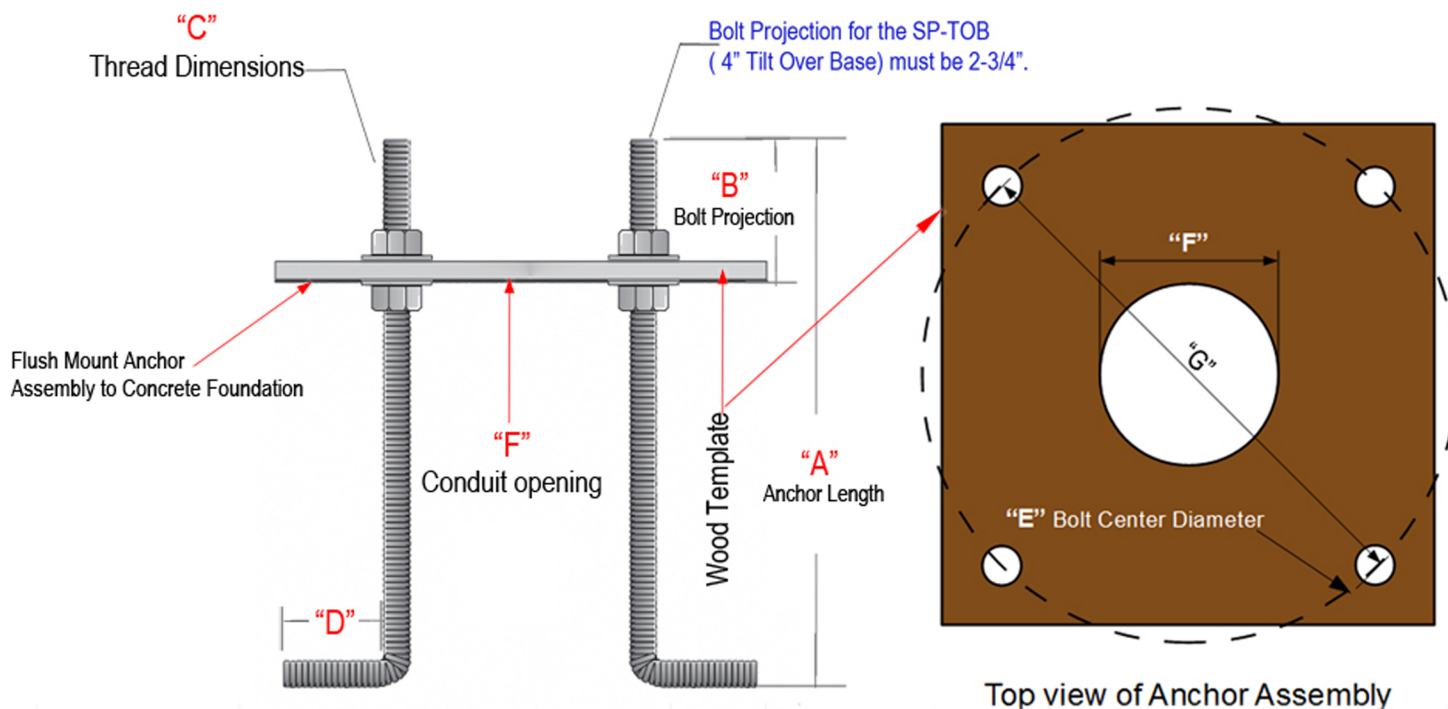
Strong Poles' pre-engineered Anchor Basket makes installations much faster, and alignment much easier. Simply push the Anchor Basket down into the wet concrete until the template is flush with the top of the concrete, and be sure that the conduit rises well above the hole in the template. Then, after the concrete has cured, remove the template and you are ready to mount the pole.

Strong Poles pre-sets each lug to the perfect height for mounting (so the lugs do not sit up too high to get the base cover in place correctly.)

Each Anchor Basket has been preset to have a projection of the bolts above the concrete at the perfect height to allow the finish caps to fit onto the pole base.

NOTE: If the installation requires the use of leveling nuts to "float" the pole on, make sure to increase the bolt projection by the appropriate amount before sinking the basket into the concrete.

After sinking the Anchor Basket into the concrete flush with the wooden template, be sure to remove the template after the concrete is cured and BEFORE mounting the pole.



Pole Size	StrongForms	Anchor Assembly Part #	"A" Anchor Length	"B" Bolt Projection	"C" Thread Dimensions	"D" Anchor L Length	"E" Bolt Center Diameter	"F" Conduit Size	"G" BCD
SteadyMax SP-SM12	StrongForm-18-5	Included	30"	2-3/4"	3/4"-10	3"	6-3/4"	Max OD 4"	9.5"
SteadyMax SP-SM16	StrongForm-18-5	Included	30"	2-3/4"	3/4"-10	3"	6-3/4"	Max OD 4"	9.5"
SteadyMax SP-SM20	StrongForm-24-5	Included	36"	2-3/4"	1" - 8	4-1/4"	8-1/4"	Max OD 4"	11.5"
SteadyMax SP-SM25	StrongForm-30-6	Included	36"	2-3/4"	1" - 8	4-1/4"	8-1/4"	Max OD 4"	11.5"
4" Square Poles Fixed Base	StrongForm-18-5	SP-AB	18"	2-1/4"	5/8"-11	4"	6"	Max OD 3"	8.5"
4" Square Poles Tilt-Over Base	StrongForm-18-5	SP-AB-TOB	18"	2-3/4"	5/8"-11	4"	6"	Max OD 3"	8.5"

