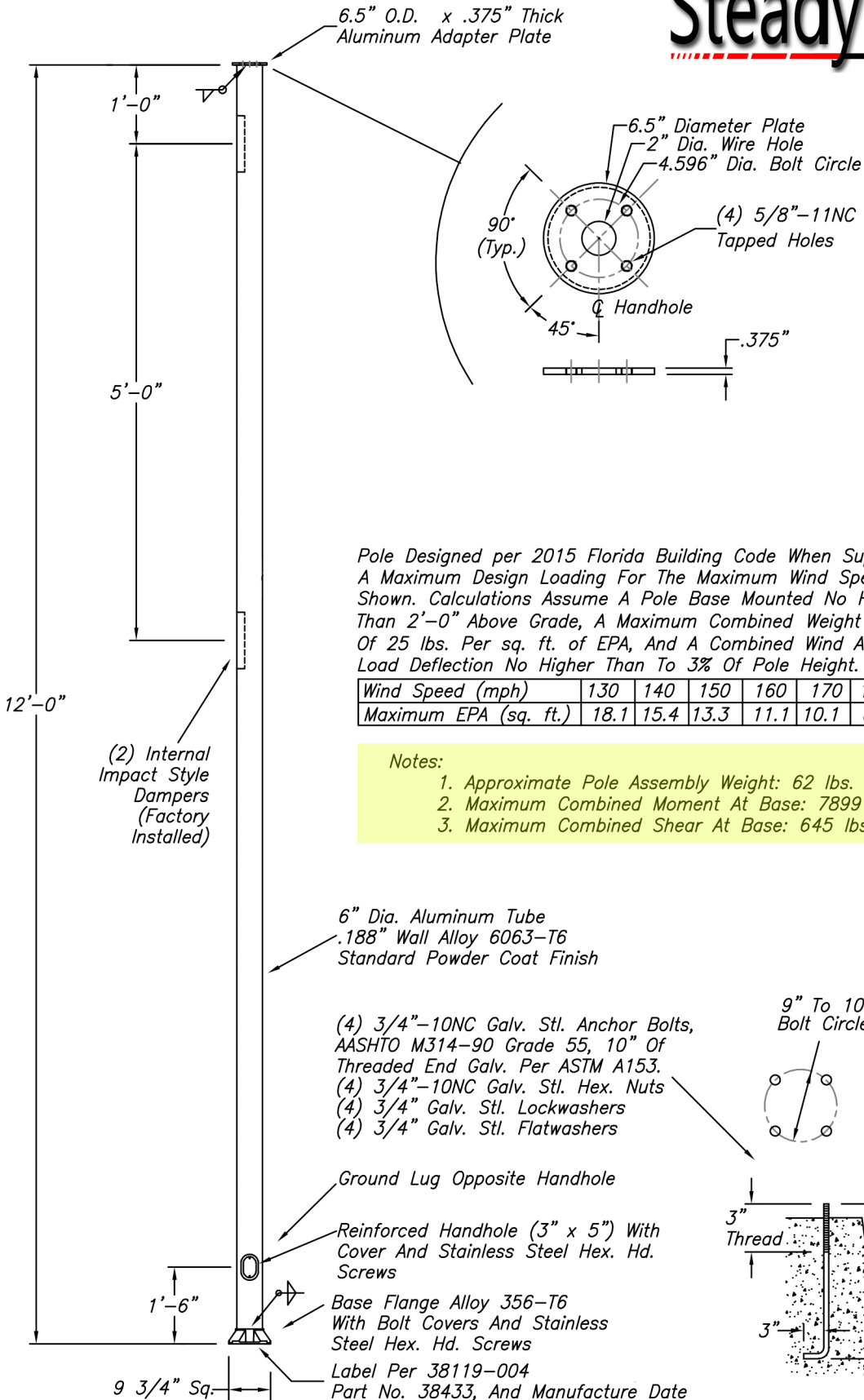


6.5" O.D. x .375" Thick  
Aluminum Adapter Plate



*Pole Designed per 2015 Florida Building Code When Supporting  
A Maximum Design Loading For The Maximum Wind Speed As  
Shown. Calculations Assume A Pole Base Mounted No Higher  
Than 2'-0" Above Grade, A Maximum Combined Weight  
Of 25 lbs. Per sq. ft. of EPA, And A Combined Wind And Dead  
Load Deflection No Higher Than To 3% Of Pole Height.*

Wind Speed (mph)	130	140	150	160	170	180	190
Maximum EPA (sq. ft.)	18.1	15.4	13.3	11.1	10.1	8.9	8.1

Notes:

1. Approximate Pole Assembly Weight: 62 lbs.
2. Maximum Combined Moment At Base: 7899 ft. lbs.
3. Maximum Combined Shear At Base: 645 lbs.


6" Dia. Aluminum Tube  
-.188" Wall Alloy 6063-T6  
Standard Powder Coat Finish

- (4) 3/4"-10NC Galv. Stl. Anchor Bolts, AASHTO M314-90 Grade 55, 10" Of Threaded End Galv. Per ASTM A153.  
(4) 3/4"-10NC Galv. Stl. Hex. Nuts  
(4) 3/4" Galv. Stl. Lockwashers  
(4) 3/4" Galv. Stl. Flatwashers

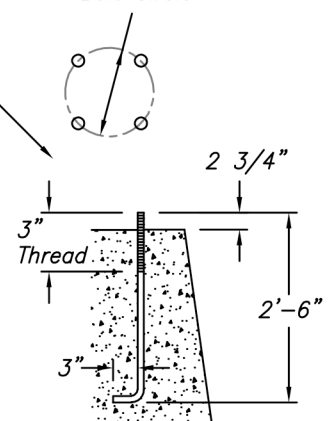
*Ground Lug Opposite Handhole*


-Reinforced Handhole (3" x 5") With  
Cover And Stainless Steel Hex. Hd.  
Screws

Base Flange Alloy 356-T6  
With Bolt Covers And Stainless  
Steel Hex. Hd. Screws

9 3/4" Sq.  Label Per 38119-004  
Part No. 38433, And Manufacture Date

9" To 10" Dia.  
Bolt Circle



NO.	REVISIONS	DATE		TITLE 12' SteadyMax Series Pole	
				Part # SP-SM12S	
				SCALE	DATE
				BY	DWG. NO.
				CHK'D	