



Steady Max Light & Camera Poles

Anchor Basket, template & nuts and washers, nut covers and hand-hole covers are included with each pole.



Part #		Suggested Retail
SP-SM16	16' Steady Max round Strong Pole	\$ 1,629.00
SP-SM20	20' Steady Max tapered round Strong Pole	\$ 2,229.00
SP-SM25	25' Steady Max tapered round Strong Pole	\$ 2,819.00
	Add an extra handhole	\$ 99.00
Specialty Steady Max Poles		
SP-SM12S	12' Steady Max Solar round Strong Pole	\$ 1,759.00
SP-SM12FL	12' Steady Max round Strong Pole specially created to withstand 175mph FL winds	\$ 1,759.00
SP-LEVEL-001	3-1/8"W x 3-1/2"L x 1/16"H leveling shims	\$ 3.00
SP-LPA	Light Pole Adapter for existing anchor baskets	\$ 399.00
SP-LPAH	Light Pole Adapter Hardware	\$ 78.00



SP-SMFG	Fence Guard	\$ 499.00
SP-SMREACH	5' Reacher PTZ / Panoramic Mount	\$ 429.00

Steady Max and 4" Pole Accessories



		Suggested Retail
SP-PTZEM	Birdhouse - 8x10 Mounting Platform	\$ 245.00
SP-SMWrap	Wrap Around Steady Max Additional Camera Platform - Originally made for 25' poles with extra handhole at the 20' level but will fit any height on the 16' Steady Max poles and anywhere from half way to the top on the 20' and 25' poles. Mountable on 3 sides / includes 2 stainless steel mounting bands. Up to 120lb.	\$ 159.00

Both SP-RRMount items must be purchased as a set



SP-RRMountWrap	Side Mount PTZ Platform for top mount PTZs Plus SMWrap	\$ 219.00
----------------	--	-----------

If you would like to purchase the SP-RRMount individually just call for pricing and availability!!



SP-RRMountBH	Platform for top mount PTZs Plus PTZEM	\$ 306.00
--------------	--	-----------



SP-PTM	Fly-Over - Ready for PTZs or Panoramic Box	\$ 315.00
--------	--	-----------



SP-PTMRFO	Fly-Out - Ready for PTZs or Panoramic Box	\$ 275.00
-----------	---	-----------



SP-DomeMountFO	Dome Mount for Fly-Over & Fly-Out	\$ 119.00
----------------	-----------------------------------	-----------



SP-DomeParaMour	Dual Dome/Bullet Adapter for Horizontal end of Para	\$ 119.00
-----------------	---	-----------



SP-2FtArmGusset	2 ft arm with dual gussets	\$ 145.00
-----------------	----------------------------	-----------

SP-Flourish	S Flourish for the 2FtArmGusset	\$ 59.00
-------------	---------------------------------	----------



SP-FlyoutPed	7.5" tall piece of 4" SP with mounting holes Square flyout pedestal	\$ 95.00
--------------	--	----------

Couplers for FlyOvers and FlyOuts



SP-1.5Coupler	1.5" to 1.5" double alum pipe coupler w/ 2 set screw	\$ 9.00
---------------	--	---------

SP-1.5reducer	1.5" to 3/4" reducer	\$ 2.00
---------------	----------------------	---------

SP-.75reducer	3/4" to 1/2" reducer	\$ 10.00
---------------	----------------------	----------



SP-TMJB	6x6 Junction Box	\$ 176.00
---------	------------------	-----------

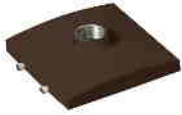


SP-TMSQ	8" Square Pedestal (for pole top)	\$ 115.00
---------	-----------------------------------	-----------



SP-PTZEM-AT	Antenna Mast for Birdhouses	\$ 105.00
-------------	-----------------------------	-----------

SP-TMAM	Pole Top Mast	\$ 105.00
---------	---------------	-----------



SP-PANO	Panoramic Camera Mount	\$ 235.00
---------	------------------------	-----------

StrongForms



Concrete Forms

		Suggested Retail
StrongForms-18-5	18" x 5' concrete round form - white	\$ 58.00
StrongForms-24-5	24" x 5' concrete round form - white	\$ 94.00
StrongForms-30-6	30" x 6' concrete round form - white	\$ 154.00

4" Camera Poles



All Poles and Accessories are available in Bronze and White		
Part #	Bronze Anodizing with top cap / handhole / grounding lug	Suggested Retail
SP-5	5' Strong Pole with Fixed Base	\$ 639.00
SP-8	8' Strong Pole with Fixed Base	\$ 699.00
SP-12	12' Strong Pole with Fixed Base	\$ 799.00
SP-TOB	Upgrade to the Tilt Over Base for the 4" Poles only	\$ 199.00

If you need to purchase a tilt over base separately please call for pricing

4" Anchor Baskets



		Suggested Retail
SP-AB or TOB	SP-AB-Anchor Basket w/ 5/8" NC / studs / wooden template (MUST specify which base it's for)	\$ 109.00

4" Accessories / Mounting Hardware



SP-WM	Wall Mount with top and bottom pieces	\$ 319.00
-------	---------------------------------------	-----------

Universal Surface Mounting System



		Suggested Retail
SP-SMP15	15" Surface Mount Pole and plate	\$ 179.00
SP-SMP30	30" Surface Mount Pole and plate	\$ 199.00

Any 4" attachment will fit this system.

Stand-Alone Mounts & Mounting Systems



These mounts are universal and can be used in many applications.		Suggested Retail
SP-CM	3-sided corner mount with top & bottom caps	\$ 115.00
SP-PTM	Fly-Over - Ready for PTZs or Panoramic Box	\$ 309.00
SP-PTMRFO	Fly-Out - Ready for PTZs or Panoramic Box	\$ 275.00
SP-PTMFROWM	Fly-Out Wall Mount	\$ 26.00
SP-DomeMountFO	Dome Mount for Fly-Over & Fly-Out	\$ 119.00
SP-PANO	Panoramic Camera Mount	\$ 235.00
EC-WE45Parapet	Parapet PTZ Camera Mount	\$ 145.00
SP-DomeParaMour	Dual Dome/Bullet Adapter for Horizontal end of Para	\$ 119.00

5" Direct Buriable Poles



		Suggested Retail
SP-DB8	8' Buriable Pole with 4' buried	\$ 690.00
SP-DB11	11' Buriable Pole with 4' buried	\$ 799.00
SP-DB16	16' Buriable Pole with 4' buried	\$ 1,009.00
SP-DB20	20' Buriable Pole with 5' buried	\$ 1,179.00
SP-DB25	25' Buriable Pole with 5' buried	\$ 1,349.00

**Tenon Mounting
Modular Pedestal
System**



SP-TenMountPed	4" x 4" x 7.5" Tenon Mounting Pedestal, that can bolt direct to the SteadyMax Poles or any 4" Square Strong Pole	\$ 96.00
SP-TenonH	6" Horizontal Tenon that can be mounted directly to the Strong Poles Tenon Mounting Platform. Tenons mounts are all 2 3/8" and any combination of up to four of the horizontal or vertical tenons can be mounted on one Tenon Mounting Pedestal.	\$ 79.00
SP-TenonV	4" Vertical Tenon that can be mounted directly to the Strong Poles Tenon Mounting Platform. Tenons mounts are all 2 3/8" and any combination of up to four of the horizontal or vertical tenons can be mounted on one Tenon Mounting Pedestal.	\$ 99.00

**LED Lights for Light
Poles**



Special Order - UL Listed and CE certified LED LIGHTS compatible with all Strong Poles 2 3/8" tenon mounts, 100-277V AC required, 5000k Temp Standard, Day Night sensors standard, 130°x75° beam angle		Suggested Retail
SP-LED150W	150W unit for a 400-500W Traditional Light Replacm	\$ 389.00
SP-LED265W	265W unit for a 1000W Traditional Light Replacmer	\$ 599.00

If any other mount is needed just ask!

We can also make 150°x75° and 150°x150° beam angles but they are special build. Wattage option for an upgrade price are available as \

Coming Soon

Solar Packages!!!

Poles Higher than 25' available in Steel with an MOQ and longer lead time!