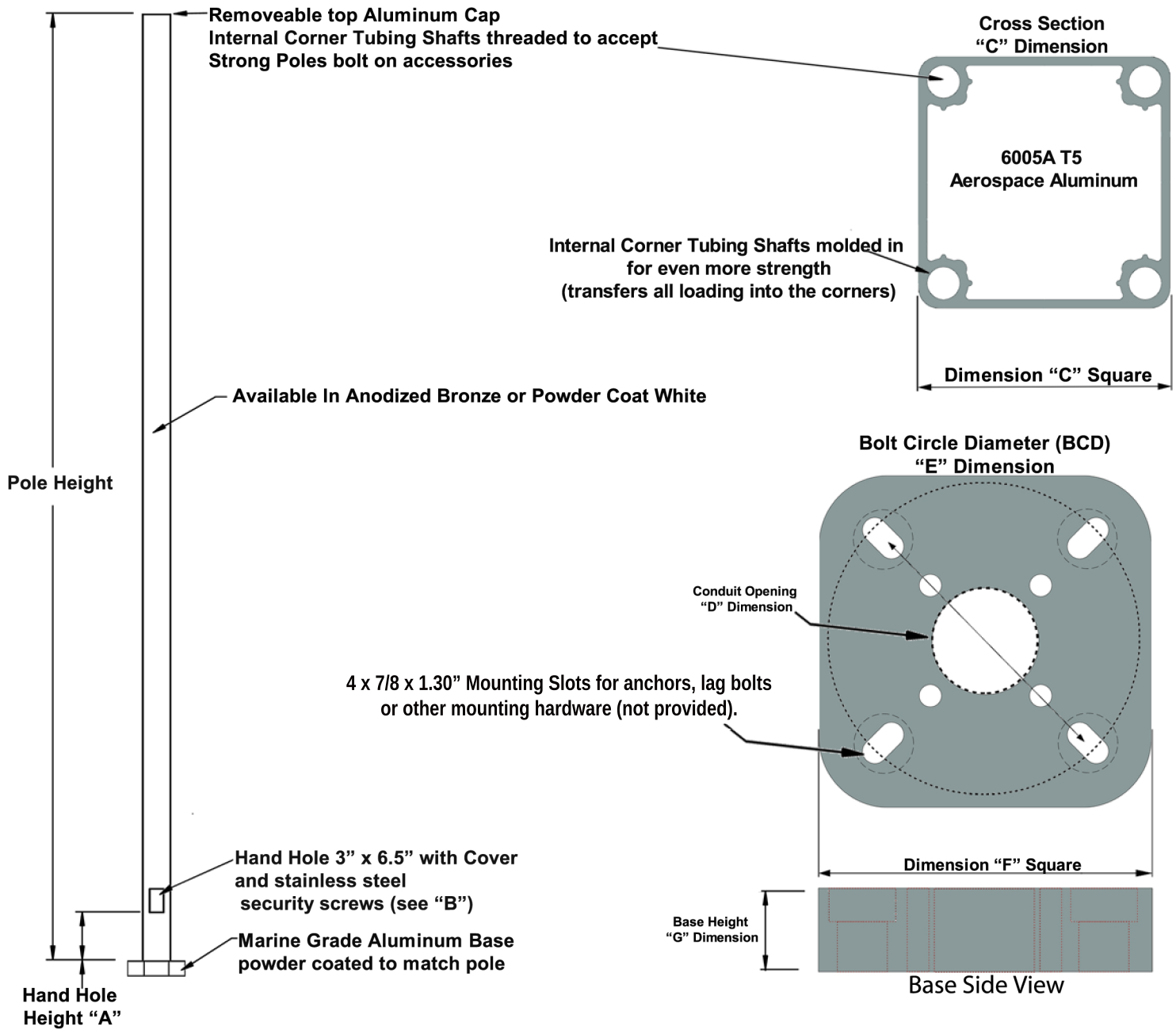




4" Square Poles Specifications



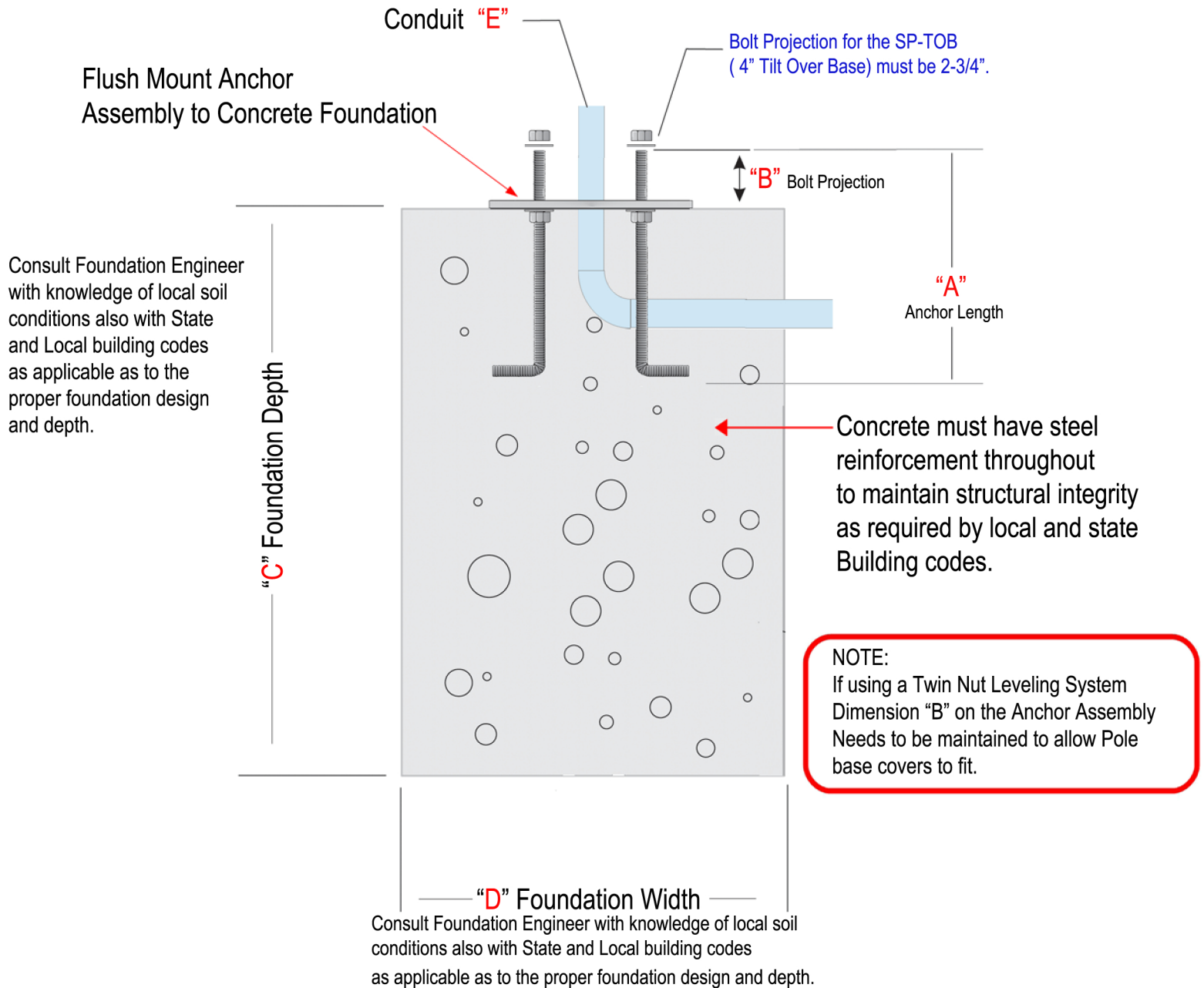
Part Number	Pole Height (in.)-(mm)	Pole Weight w/ base	A (in.)	B(in.)	C (in.)	D (in.)	E (in.)	F (in.)	G (in.)
SP-5	5' - (1.52m)	45lb	18	2" x 4.5"	4"	2.90"	8.50"	10.00"	2.5"
SP-8	8' - (2.43m)	60lb	18"	2" x 4.5"	4"	2.90"	8.50"	10.00"	2.5"
SP-12	12' - (3.65m)	75lb	18"	2" x 4.5"	4"	2.90"	8.50"	10.00"	2.5"
	DIA	Height	EPA Wind Velocity (MPH)				Weight	BCD	
	inch	ft.	90	100	120	150	lbs	inch	
SP-12	4.00"	12'	17.4	13.5	8.89	5.76	55	8.5"	

www.strongpoles.com
844-669-3537





Foundation & Anchor Assembly Recommendations



Pole Size	StrongForms	Anchor Assembly Part #	"A"	"B" Bolt Projection	"C & D"	"E" Conduit Size	BCD
SteadyMax SP-SM16	StrongForm-18-5	Included	30"	2-3/4"	Consult Foundation Engineer	Maximum OD 4"	9.5"
SteadyMax SP-SM20	StrongForm-24-5	Included	36"	2-3/4"		Maximum OD 4"	11.5"
SteadyMax SP-SM25	StrongForm-30-6	Included	36"	2-3/4"		Maximum OD 4"	11.5"
4" Square Poles	StrongForm-18-5	SP-AB	18"	2-1/4" **		Maximum OD 3"	8.5"
	StrongForm-24-5						

** NOTE-Bolt Projection for the SP-TOB (4" Tilt Over Base) must be 2-3/4".

www.strongpoles.com

844-669-3537

