

844-669-3537



WWW.STRONGPOLES.COM



# **STRONGPOLES**

## SECURITY MOUNTING SOLUTIONS

StrongPoles builds the industry's most ultra-steady camera and communication poles — trusted at thousands of facilities, campuses, and parks worldwide.

Engineered for rock-solid stability and crystal-clear video, our poles are available in the heights professionals demand, all the way up to a commanding 40 ft for maximum coverage and visibility.





## StrongPoles: Innovating Security Mounting Solutions

Born from a desire to enhance the stability and performance of security cameras, **StrongPoles** was founded by industry experts who recognized that camera shake, and poor image quality often stemmed from subpar mounting equipment.

With nearly a decade of dedication to innovation, **StrongPoles** introduced the game-changing **4" Square Pole**, designed to minimize vibration and ensure steady camera performance across all brands.



**Jean Rodrigues**  
SALES MANAGER

 (844) 669-3537  
(903) 498-0980

 [www.StrongPoles.com](http://www.StrongPoles.com)  
[Jean@StrongPoles.com](mailto:Jean@StrongPoles.com)

 203 N. Elm St  
Kemp, TX 75143

Continuing to lead in the field, the company launched the **SteadyMax** Series, incorporating factory-installed vibration suppression systems that tackle external environmental factors head-on.

**StrongPoles** remains committed to providing top-tier, purpose-built solutions for various security installations, ensuring crystal clear surveillance footage every time.

**STRONGPOLES**  
SECURITY MOUNTING SOLUTIONS

# Table of Contents

Poles	2
Break-Away Pole	8
Pole Foundations & Forms	10
Pole Accessories	12
Outdoor Building Mounts	17
Outdoor Mounting Accessories	20
Non-Penetrating Flat Roof Mounts	24
Keypad & Reader Pedestals	30
LED Lighting	33
Indoor Mounting	35
Foundation Recommendations	48





# Poles

- SteadyMax
- Legacy 4" Square
- Direct Bury
- Break-Away



### SteadyMax - 16 ft.

SP-SM16

16 ft. Round Non-Tapered **SteadyMax** - These engineered camera poles have a Factory-Installed Vibration Suppression System that consists of two different frequency dampeners that quell high and low frequency vibrations and oscillations that may occur during the life of the pole. Strong Pole Anchor Basket, template & nuts and washers, nut covers and hand-hole covers are included with each pole.



### SteadyMax - 20 ft.

SP-SM20

20' Round Tapered **SteadyMax** - These engineered camera poles have a Factory-Installed Vibration Suppression System that consists of two different frequency dampeners that quell high and low frequency vibrations and oscillations that may occur during the life of the pole. Strong Pole Anchor Basket, template & nuts and washers, nut covers and hand-hole covers are included with each pole.



### SteadyMax - 25 ft.

SP-SM25

25' Round Tapered **SteadyMax** - These engineered camera poles have a Factory-Installed Vibration Suppression System that consists of two different frequency dampeners that quell high and low frequency vibrations and oscillations that may occur during the life of the pole. Strong Pole Anchor Basket, template & nuts and washers, nut covers and hand-hole covers are included with each pole.



### SteadyMax - 30 ft.

SP-SM30

30' Round Tapered **SteadyMax** - These engineered camera poles have a Factory-Installed Vibration Suppression System that consists of two different frequency dampeners that quell high and low frequency vibrations and oscillations that may occur during the life of the pole. Strong Pole Anchor Basket, template & nuts and washers, nut covers and hand-hole covers are included with each pole.

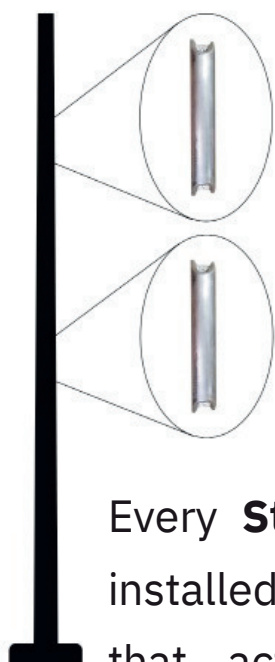




## SteadyMax-FL - 12 ft.

SP-SM12FL

12' Round **SteadyMax** Pole specially created to withstand 195mph Florida winds. These engineered camera poles have a Factory-Installed Vibration Suppression System that consists of two different frequency dampeners that quell high and low frequency vibrations and oscillations that may occur during the life of the pole. Strong Pole Anchor Basket, template & nuts and washers, nut covers, and hand-hole covers are included with each pole.



First Mode Vibration Dampener

Second Mode Vibration Dampener

Every **SteadyMax** comes with a factory installed **Vibration Suppression System** that actively fights against first and second mode vibrations and shake due to wind and site frequency and resonance.

## Extra Hand Hole Add-On

SP-SMXH



Add an extra hand hole to any of our **SteadyMax** Poles

Model	Height	Butt Diameter	Wall Thickness	130 mph	140 mph	150 mph	160 mph	170 mph	180 mph	190 mph
SP-SM12FL	12 ft	6"	0.188"	18.1	15.4	13.3	11.1	10.1	8.9	8.1
SP-SM16	16 ft	6"	0.156"	7.4	5.8	5	4.3	3.7	3.2	2.8
SP-SM20	20 ft	8"	0.156"	10.9	8.7	7.4	6.4	5.5	4.9	4.2
SP-SM25	25 ft	8"	0.25"	10	7.7	6.5	5.6	4.8	4.2	3.6
SP-SM30	30 ft	8"	0.25"	4.7	3.9	3.3	2.7	2.3	1.9	1.5

THE TABLE ABOVE SHOWS THE EFFECTIVE PROJECTED AREA (EPA) WIND VELOCITY RATINGS FOR DIFFERENT STRONGPOLES MODELS AT VARIOUS WIND SPEEDS. THE VALUES REPRESENT THE MAXIMUM WIND SPEED (IN MPH) THAT EACH MODEL, CAN WITHSTAND, WHILE MAINTAINING OUR MAXIMUM AVAILABLE MOVEMENT CONSIDERING A GUST FACTOR OF 1.3. THIS GUST FACTOR ACCOUNTS FOR SUDDEN INCREASES IN WIND SPEED, ENSURING THE POLES CAN HANDLE SHORT BURSTS OF HIGHER WIND SPEEDS WITHOUT COMPROMISING STABILITY.

# 35FT & 40FT SECURITY/COMMUNICATION POLES

“STEADYMAX  
STRATOS:  
BUILT TO THE  
TRIPLE-A  
BENCHMARK  
OF  
STRENGTH,  
STABILITY,  
AND  
SECURITY.”



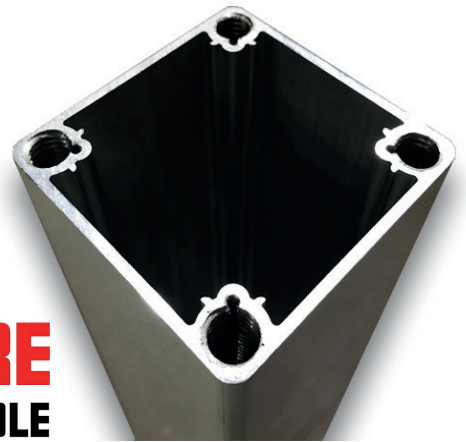
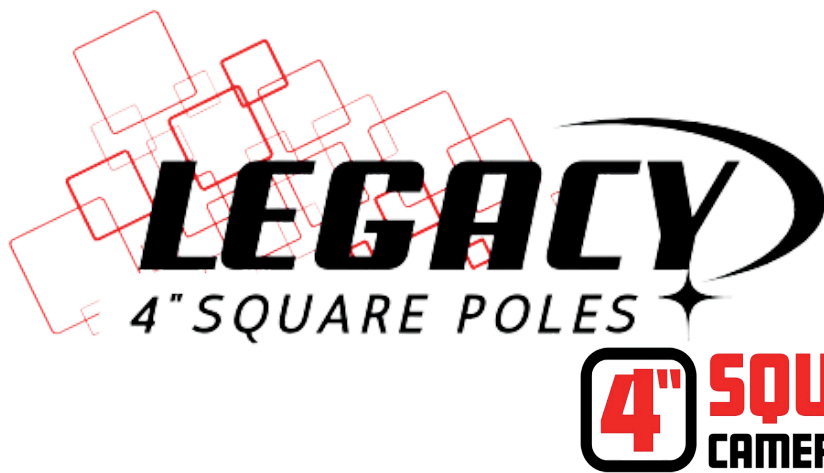
**STEADY  
max  
STRATOS**

**COMING SOON**

SPECIAL ORDER FOR CUSTOM PROJECTS  
CALL US!

**1-844-669-3537**





Built out of a special Aerospace Aluminum, these **4" Security Camera Poles** are designed to reduce the amount of movement and shake commonly found with many light poles. Using **StrongPoles** solves a whole host of problems with using existing light poles and hose clamps for your security cameras, sensors and detectors.

*Our 4" Anchor Basket is not included with our 4" Camera Poles (unlike our SteadyMax poles.) Add a 4" Anchor Basket for an additional fee.*

- Designed to fit any technology –any brand– Wireless or Wired
- Patented “No-Welds” Technology yields more strength than any other pole (35,000 psi yield strength)
- Internal Corner Tubing Shafts molded in
- Available in White or Dark Bronze/Black Finish



**Legacy Pole with Fixed Base (Standard Base)**



**4" Tilt Over Base**

Upgraded option for the 4" Square Camera Poles to allow the pole to be tilted over for easy access to the top of the pole.



**SP-TOB**

- 4" Square Pole - 5 ft** SP-5
- 4" Square Pole - 8 ft** SP-8
- 4" Square Pole - 10 ft** SP-10
- 4" Square Pole - 12 ft** SP-12
- 4" Square Pole - 15 ft** SP-15
- 4" Square Pole - 16 ft** SP-16

Model	Height	90 mph	100 mph	120 mph	150 mph
SP-5	5 ft	21.86	17.79	13.94	12.17
SP-8	8 ft	20.02	16.01	11.7	9.49
SP-10	10 ft	18.9	14.9	10.1	7.8
SP-12	12 ft	17.4	13.5	8.89	5.76
SP-15	15 ft	15.8	11.9	6.4	3.3
SP-16	16 ft	15	11	5.9	2.8

THE TABLE ABOVE SHOWS THE EFFECTIVE PROJECTED AREA (EPA) WIND VELOCITY RATINGS FOR DIFFERENT STRONGPOLES MODELS AT VARIOUS WIND SPEEDS. THE VALUES REPRESENT THE MAXIMUM WIND SPEED (IN MPH) THAT EACH MODEL, CAN WITHSTAND, WHILE MAINTAINING OUR MAXIMUM AVAILABLE MOVEMENT CONSIDERING A GUST FACTOR OF 1.3. THIS GUST FACTOR ACCOUNTS FOR SUDDEN INCREASES IN WIND SPEED, ENSURING THE POLES CAN HANDLE SHORT BURSTS OF HIGHER WIND SPEEDS WITHOUT COMPROMISING STABILITY.



## SQUARE DIRECT BURY POLES

The advantages of aluminum poles make them the perfect option for direct buried applications.

With a record of successful installations throughout the country, **StrongPoles** Aluminum Direct Buried Poles provide industry professionals with significant overall job savings.

**StrongPoles** Aluminum Direct Buried Poles are the perfect solution to the high maintenance alternative of composite poles.

### FIVE INCH DIRECT BURY



8 ft - SP-DB8

11ft - SP-DB11

16 ft - SP-DB16

20 ft - SP-DB20

25 ft - SP-DB25



8 ft - SP-4-DB8

12 ft - SP-4-DB12

16 ft - SP-4-DB16

### 5" to 4" Pole Adapter

Easily transition from a 5" Direct Bury pole to a 4" pole with this versatile adapter. Compatible with most accessories (excluding pedestal mounts), this adapter ensures a seamless fit and reliable performance for your mounting needs.

SP-Adapter



## DIRECT BURY SQUARE POLES



# Break-Away

POLES







## Break Away Pole

SP-HLPRBA-10-BL

The Break-Away Pole is designed to meet roadside safety standards while delivering rugged performance in high-risk environments. Ideal for traffic monitoring, surveillance, and signage applications, this pole features a precision-engineered breakaway base that detaches cleanly upon impact—minimizing damage and enhancing driver safety.

Breakaway pole designed for 10 ft above-ground height with 4 ft of below-grade installation.

### Key Features:

- **Crash-Tested Design:** Complies with FHWA breakaway requirements for roadside installations.
- **Durable Construction:** Built from high-strength to withstand harsh weather and vibration.
- **Modular Base System:** Allows for quick replacement after impact without disturbing the foundation.
- **Versatile Mounting Options:** Compatible with camera systems, sensors, and signage brackets.
- **Corrosion-Resistant Finish:** Powder-coated for long-term outdoor use.

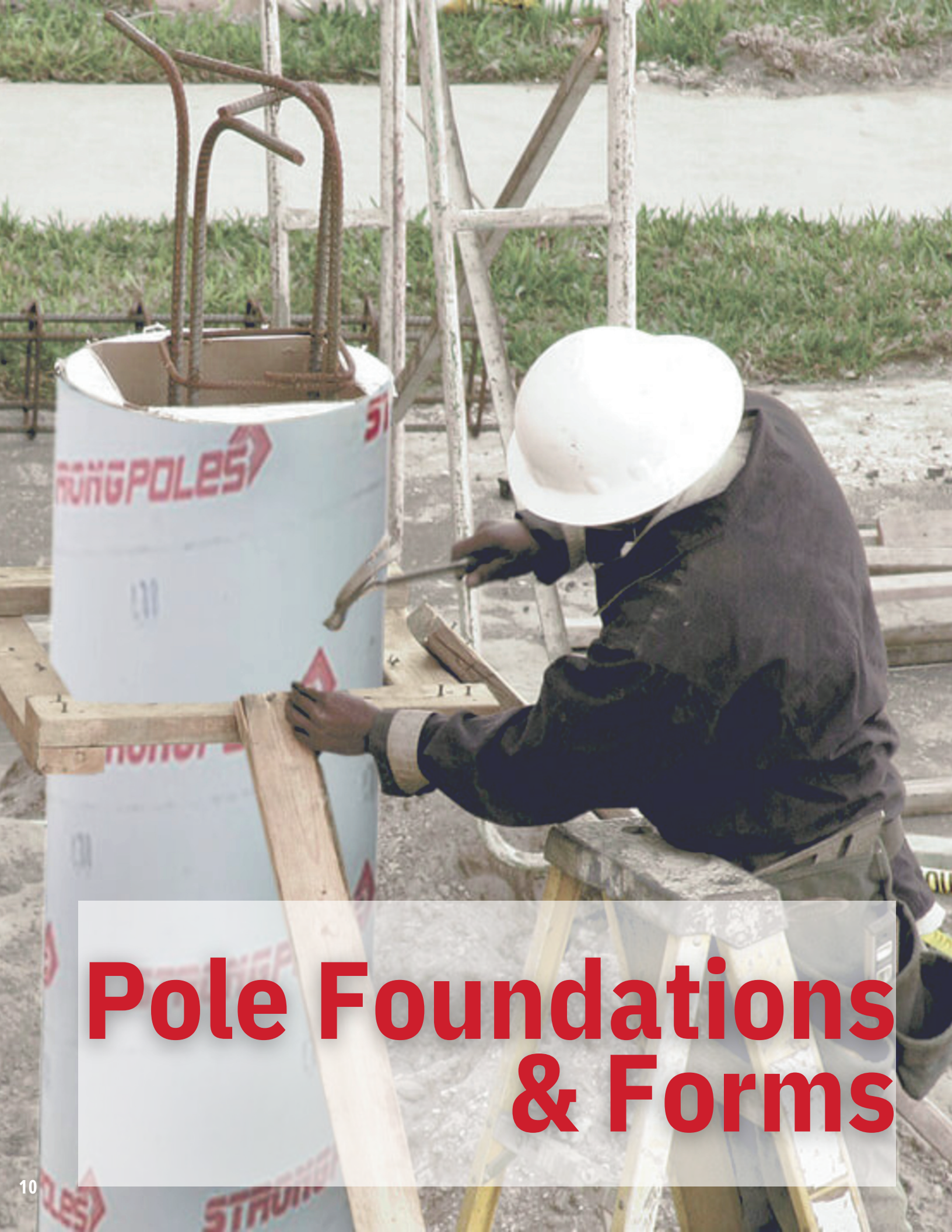


Whether you're deploying in DOT zones, parking lots, or perimeter security setups, the Break-Away Pole offers peace of mind and operational continuity.



Need another size?  
Ask Us About IT!





# Pole Foundations & Forms





Diameter/Height:	SKU:
18" / 5'	StrongForms-18-5
24" / 5'	StrongForms-24-5
30" / 6'	StrongForms-30-6



## Anchor Basket -for SteadyMax Poles

SP-SM

Anchor Baskets-3/4" or 1" NC / Studs / Wooden Template

Our Anchor Baskets make installation much faster, and alignment much easier. Simply push the Anchor Basket down into the wet concrete until the template is flush with the top of the concrete and be sure that the conduit rises well above the hole in the template. Then, after the concrete has cured, remove the template and you are ready to mount the pole.

POLE SIZE	STRONGFORM	ANCHOR ASSEMBLY PART
SteadyMax SP-SM12 FL	StrongForm-18-5	Included
SteadyMax SP-SM16	StrongForm-18-5	Included

**Anchor Baskets Bolts: 3/4" NC**

POLE SIZE	STRONGFORM	ANCHOR ASSEMBLY PART
SteadyMax SP-SM20	StrongForm-24-5	Included
SteadyMax SP-SM25	StrongForm-30-6	Included
SteadyMax SP-SM30	StrongForm-30-6	Included

**Anchor Baskets Bolts: 1" NC**

Each Anchor Basket has been preset to have a projection of the bolts above the concrete at the perfect height to allow the finish caps to fit onto the pole base.

***\*MUST SPECIFY WHICH BASE IT'S FOR STANDARD OR TILT OVER BASE\****



## Anchor Basket -for 4" Legacy Poles

SP-AB  
SP-AB-TOB

Anchor Baskets- 5/8" NC / Studs / Wooden Template

Anchor Baskets make installation much faster, and alignment much easier.

POLE SIZE	STRONGFORM	ANCHOR ASSEMBLY PART
4' Square Poles Fixed Base	StrongForm-18-5	SP-AB
4' Square Poles Tilt-Over Base	StrongForm-18-5	SP-AB-TOB

**Tilt-Over Base is an upgrade and an additional charge**

## Light Pole Foundation Adapter

SP-LPA

Convert existing anchor foundations with a wide range of bolt circles usable with **StrongPoles** Bases. Eliminate the cost of removing the existing foundation. Saves the cost of labor, forms, bolts, and concrete by adapting the existing pattern to fit **StrongPoles** Bolt pattern.

The adapter will accommodate foundation Bolt Circle of:



Top Bolt Circle	7.5" - 12"
Bottom Bolt Circle Range - Diamond	10.5" - 14"
Bottom Bolt Circle Range - Square	10.5" - 14.5"

## Light Pole Adapter Hardware

SP-LPAH

Light Pole Adapter Hardware  
Bolt Size: 5/8" x 3"  
Washer Size: 5/8" SAE Flat HDG  
Nut Size: 5/8-11 A563 GRA HDG



## Leveling Shims

SP-LEVEL-001

3-1/8" W x 3-1/2" L x 1/16" H Leveling Shims



A black metal pole stands vertically against a bright blue sky filled with white, fluffy clouds. Attached to the pole are several lighting fixtures: a modern, rounded, silver-colored light fixture on a curved arm; a rectangular, grid-patterned light fixture on a horizontal arm; and a large, rectangular, black light fixture with a grid of small lights on a vertical arm. The pole itself is a simple, dark metal shaft.

# Pole Accessories

Products that mount directly to

- **SteadyMax** Poles
- 4" Legacy Poles
- 4" & 5" Direct Bury Poles

SP-SMFG

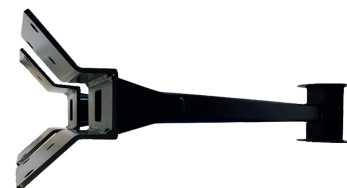
## Fence Guard

Extending around 32" from the pole, the Fence Guard is designed to be attached to round poles and aid camera analytics down fence or property lines. It can accommodate - two cameras (domes or bullets) and a PTZ on the 1.5" NPT threaded connector; U-bolts provided with order.



Fence Guard with Pole Mount  
SP-SMFG-PM

Fence Guard with Flat Mount  
SP-SMFG-FM



Fence Guard with Corner Mount  
SP-SMFG-CM



Reacher with Flat Mount

## Reacher - Pole Mount

SP-SMREACH

5 ft Reacher Mount is designed to be attached to round poles and reach out over a property line or fence. It can accommodate a PTZ on the 1.5" NPT threaded connector. Other camera types can be used with the use of additional mounting accessories: U-bolts provided for **SteadyMax** poles.



SIDE VIEW

## Reacher - Corner Mount

SP-SMREACHCM

5' Corner Mount Reacher is designed to be attached to exterior corners of buildings. It can accommodate a PTZ on the 1.5" NPT threaded connector. Other camera types can be used with the use of additional mounting accessories.



## Reacher - Flat Mount

SP-SMREACHFM

5' Flat Mount Reacher is designed to be attached to exterior of buildings. It can accommodate a PTZ on the 1.5" NPT threaded connector. Other camera types can be used with the use of additional mounting accessories.



## Fence Guard & Reacher Mounting Options:

TOP VIEW

FRONT VIEW



POLE MOUNT

TOP VIEW

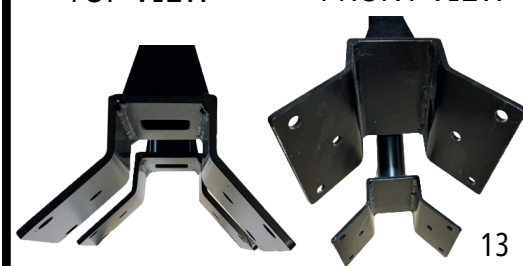
FRONT VIEW



FLAT MOUNT

TOP VIEW

FRONT VIEW



CORNER MOUNT



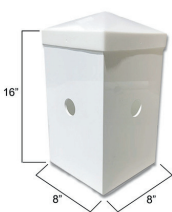
**Birdhouse**

SP-PTZEM

The *Birdhouse* is an 8x8x10 mounting platform (8x8x8 actual mounting space) designed to be affixed to the top of any **SteadyMax**, 4" Square Camera Poles, or 5" Direct Bury (with adapter) allowing you to attach equipment to all four sides.



SP-PTZEM16 is an 8x8x16 mounting platform *Birdhouse*

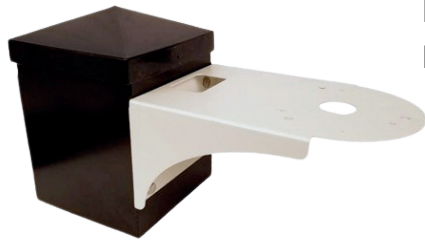


SP-PTZEM16

**Birdhouse w/ RR Mount**

SP-RRMountBH

Platform for top mount PTZs Plus PTZEM



SP-SMWrap

**Wrap Around Mount**

Wrap Around Steady Max Additional Camera Platform - Originally made for 25' poles with extra hand-hole at the 20' level but will fit any height on the 12' and 16' **SteadyMax** poles and anywhere from half way to the top on the 20', 25', and 30' poles.  
Mountable on 3 sides / includes 2 stainless steel mounting bands.

Weight capacity: 120 lbs.



**Wrap Around w/ RR Mount**

SP-RRMountWrap

Side Mount PTZ Platform for top mount PTZs Plus SMWrap







## 6x6 Junction Box

SP-TMJB

Designed to be mounted on top of a pole; each 4x6 face of the 6x6 Junction Box can be mounted to.



## 4Ft Building Mount Bullet Box

SP-BMBB4

## 6Ft Building Mount Bullet Box

SP-BMBB6

These wall-mounted boxes are designed to securely hold bullet and/or dome cameras. It features a 4 ft or 6 ft mounting height, an anti-roosting pyramid cap to prevent birds from nesting and includes a wiring and device junction box.

**Available in White Only**



## HD Square Pole Top Pedestal

SP-TMSQHD

Heavy Duty Top Mount Square Pedestal Mount



## Twin HD Square Pole Top Pedestal

SP-TwinTMSQ

Twin Top Mount Square Pedestal Mount

## Birdhouse with Antenna Mast





## Communications Mast

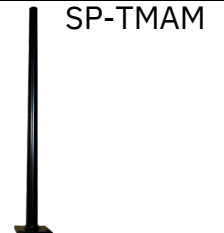
This sturdy, ultra-rigid Mast not only adds 5 feet to the height of any Strong Pole, including **SteadyMax**, but gives you the ability to mount multiple levels and types of repeaters, transmitters, antennas and other types of communications gear, up and down the length of the Mast.

**Available in Dark Bronze (Black) Only**

Attachments sold separately

## Pole Top Antenna Mast

Measuring 39" high, the Pole Top Antenna Mast provides ample reach and space for mounting wireless antennas or other security equipment on top of your pole. Perfect for top of **SteadyMax** or any of the 4" Square Poles.



## Pole Top Mounting Pedestal

SP-TenMountPed

The 4x4x7 inch mounting pedestal provides an excellent mounting platform for Fly-Outs, Fly-Over's (see page 18) or any of our mounting accessories with our *Standard Side Mounting Plate* Configuration like the Tenon Mounts on page 27.

## SteadyMax with Pole Top Mounting Pedestal, LED Area Lights, and Fly-Out



## SteadyMax with Pole Top Mounting Pedestal, LED Area Light, and 5' Reacher





# Outdoor Building Mounts

Products that mount to the  
exterior of buildings





## Fly-Over

SP-PTM

The Fly-Over was designed to provide a wider field of view for PTZ cameras that hang from the 1.5" NPT threaded connector. There are many ways you can use this mount from PTZs to panoramic cameras.  
*\*Standard Side Mounting Plate*



## Fly-Out

SP-PTMRFO

Like the Fly-Over the Fly-Out provides you with a wider field of view with the added functionality of mounting it directly to a wall using the available wall mount (see above). The Fly-Out has a 1.5" NPT threaded connector.  
*\*Standard Side Mounting Plate*



## Fly-Out Wall Mount

SP-PTMRFOWM

Fly-Out Wall Mount is a simple yet powerful little device that allows you to attach one of our Fly-Outs (see below) to a wall.



18  
**HD Parapet with 4" tenon, LED Light, and PTZ Camera**

## Fly-Out with Fly-Out Wall Mount and Dual Camera Mount





## Surface Mount Pole

SP-SMP15  
SP-SMP30  
SP-CRPM48

Built with the same square aluminum stock as our 4" Square Camera Poles these 15", 30", and 48" Surface Mount Pole are perfect for adding security mounting options to nearly any surface.

***48" Surface Mount Pole is available in hammered black only.***

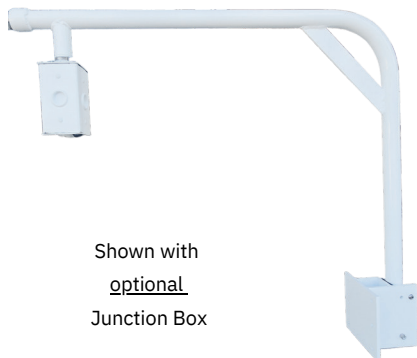


## Parapet Mount

SP-Parapet

This sturdy Parapet Mount attaches to a Parapet Wall and can be rotated 360 degrees to accommodate any mounting angle. The 1.5" NPT threaded connection is perfect attaching a PTZ and the "Back Flip" design makes mounting and adjusting cameras a breeze! For added ability see the PTZ extensions and adapters on page 25.

**Only available in white.**



Shown with  
optional  
Junction Box

## HD Parapet Mount

SP-ParapetHD

The Heavy-Duty Parapet Wall Camera Mount is perfect for mounting multiple PTZ Cameras to the 1.5" NPT threaded connection and wireless devices to parapet walls. Its sturdy construction is capable of supporting up to 50lbs without significant bending. The 360-degree rotation and "Back Flip" design make this an unbeatable mount.

**Only available in white.**

Can be paired with ***Parapet Extension*** - SP-TPEPMO



Check out the latest  
***Parapet Option*** on page 25



Non-Penetrating Flat Roof Mount





# Outdoor Mounting Accessories





### Side Mount Antenna Mast

SP-SMAM

The Side Mount Mast is constructed with 1-1/2" aluminum tubing and attaches to any of our products with our *Standard Side Mounting Plate* configuration. This 36" high mast is tall enough for the largest antennas. The top end is capped with a weatherproof plastic cap insert.



### Fly-Over / Fly-Out Dome Mount

SP-DomeMountFO

This Dome Mount is designed to fit to the 1.5" NPT threaded connection on the Fly-Over & Fly-Out Mounts but could be fitted to any of our accessories with the same 1.5" NPT fitting.



### Dual Camera Mount

SP-DualParaMount

Dual Dome/Bullet Adapter is a perfect complement to our 2 Foot Arm, Parapet Mounts, 5' Reacher and more with 1.5" NPT fitting.



### Dual Camera Mount with PTZ Adapter

SP-DualParaMountXN

This Dual Camera Mount fits onto any **StrongPoles** Accessories that have a 1-1/2" NPT fitting (examples: Fly-Out, Reacher, Parapet Mount, Any PTZ Mount with 1-1/2" NPT Fitting).

The Arms are a fantastic utility mount. Perfect for mounting PTZs on the 1.5" NPT threaded connection or other cameras with other available accessories.



### 1 Foot Arm

SP-1FtArmGusset



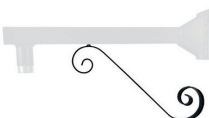
### 2 Foot Arm

SP-2FtArmGusset



### 3 Foot Arm

SP-3FtArmGusset



Standard Side Mounting Plate SP-Flourish



## Antenna Mast for Birdhouse

SP-PTZEM-AT

This 39" tall Antenna Mast is designed to be attached to our Birdhouses (see page 14).



## Junction Box w/ Side Mounts

SP-JB-SMP

4"x4"x7" Junction Box with 3 *Standard Side Mounting Plate Configurations*



## Fly-Out Pedestal

SP-FlyoutPed

7.5" tall piece of 4" SP with mounting holes Square fly-out pedestal

*Standard Side Mounting Plate configurations*



## Side Mount Platform

SP-PACM

Pedestal Attached Camera Mount  
*Standard Side Mounting Plate*

No matter the type of wall or mounting place, **StrongPoles** has the perfect solution for you.



Junction Box  
with 2-Foot  
Arms and  
additional  
Junction Box

Junction Box  
with Side  
Mount  
Platform

Fly-Out  
Pedestal with  
Fly-Out

## 4" Square Pole Wall Mount

SP-WM



The 4" Square Wall Mount works with our 5', 8', 10', 12' and 15' **Legacy** 4" Square Camera Poles (see page 6) allowing you to mount them at any height on an exterior building wall.



### Corner Mount

3-sided corner mount with top & bottom caps allow you to mount your equipment by drilling holes where you need them.

SP-CM



### HD Corner Mount

Our Heavy-Duty Corner Mounts are made out of the same extruded aluminum that our 4" Square Camera Poles are made of so you know they are strong. 3 sides are fitted with our *Standard Side Mounting Plate* configuration.

SP-HDCM



### Flat Mount

3-sided flat mount with top & bottom caps allow you to mount to any wall.

SP-CM-Flat

### HD Corner Wall Mount with 2-Foot Arm, Pole Top Antenna Mast, Dual Camera Mount, and Fly-Outs



### HD Corner Wall Mount with 2-Foot Arms, Horizontal Tenon Mount and LED Light



# 4" SQUARE NON-PENETRATING FLAT ROOF MOUNTING PLATFORM

4" Square Pole Version

CONCRETE / SANDBAGS NOT INCLUDED

FLAT ROOF  
MOUNTING  
PLATFORM

3FT-6FT



WITH FLY-OVER



WITH FLY-OUT

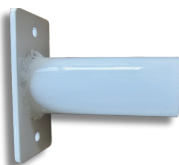


## MOUNTING / ATTACHMENT OPTIONS

SIDE MOUNT  
PLATFORM



H TENON



V TENON



ANGLE  
ADJUSTABLE  
ANTENNA  
MOUNT



HEAVY DUTY  
ANGLE  
ADJUSTABLE  
ANTENNA  
MOUNT



SIDE MOUNT  
ANTENNA MAST



# NON-PENETRATING

## FLAT ROOF MOUNTING PLATFORM

## PARAPET



**PARAPET VERSION**

CONCRETE / SANDBAGS NOT INCLUDED

**FLAT ROOF  
MOUNTING  
PLATFORM**

**MULTI-PURPOSE  
6×8 BOX (MP-68)**



**MULTI-PURPOSE  
8X8X10 PTZ BOX**



**JUNCTION BOX**



**DUAL DOME/  
BULLET ADAPTER**



**TWIN PTZ**



**DUAL CAMERA MOUNT  
WITH PTZ ADAPTER**



**90° ADAPTER  
WITH COUPLER  
& DOME  
CAMERA MOUNT**



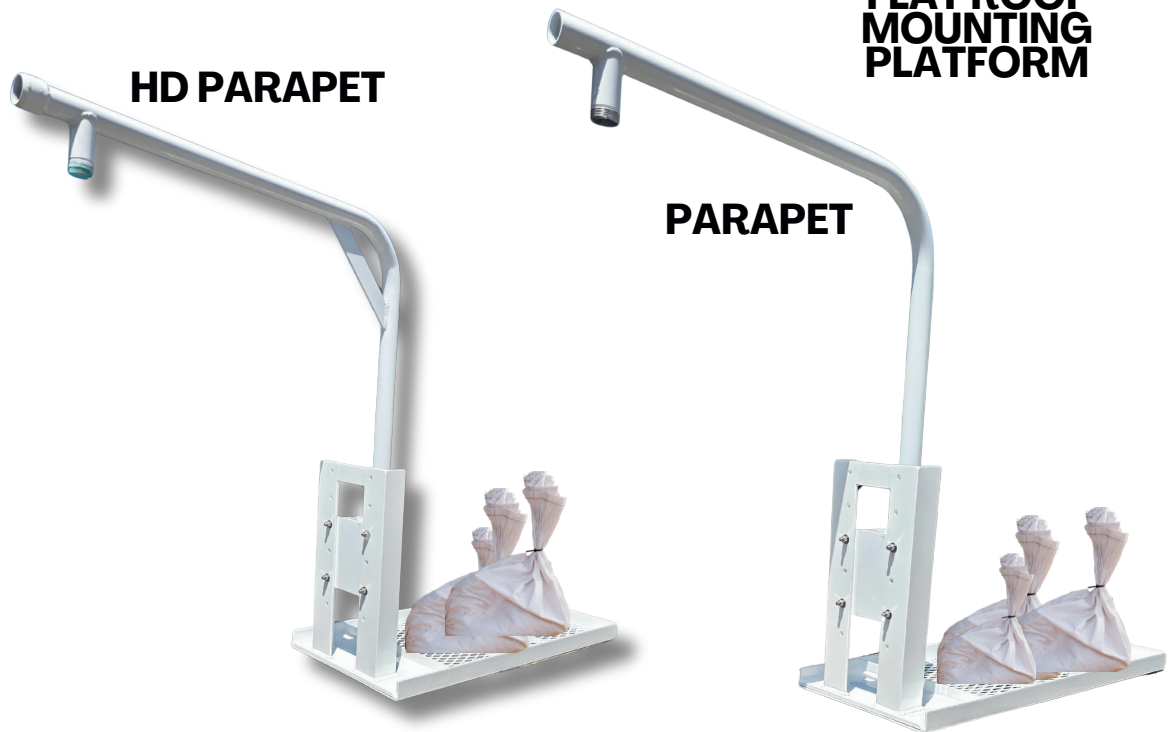
**EXTENTION**



**DUAL CAMERA  
MOUNT**



**HD  
PARAPET  
TENON**



**HD PARAPET**

**PARAPET**

## MOUNTING / ATTACHMENT OPTIONS

NOTE: EVERY PART IS SOLD INDIVIDUALLY, GIVING YOU THE FREEDOM TO CHOOSE ONLY THE COMPONENTS YOU NEED FOR YOUR IDEAL ROOFTOP CONFIGURATION.



## Panoramic Camera Mount

The Panoramic Camera Mount can be attached to any of our mounts with the 1.5" NPT threaded connection.



## StrongMount-44

StrongMount-44

4x4x3 Nema/UL 6P (IP68) Impact and Sun Resistant Polycarbonate Enclosure



## StrongMount-55

StrongMount-55

5x5x3 Nema/UL 6P (IP68) Impact and Sun Resistant Polycarbonate Enclosure



## StrongMount-66

StrongMount-66

6x6x3 Nema/UL 6P (IP68) Impact and Sun Resistant Polycarbonate Enclosure



## StrongMount-86

StrongMount-86

8x6x3 Nema/UL 6P (IP68) Impact and Sun Resistant Polycarbonate Enclosure



## StrongMount-98

StrongMount-98

9x8x3 Nema/UL 6P (IP68) Impact and Sun Resistant Polycarbonate Enclosure



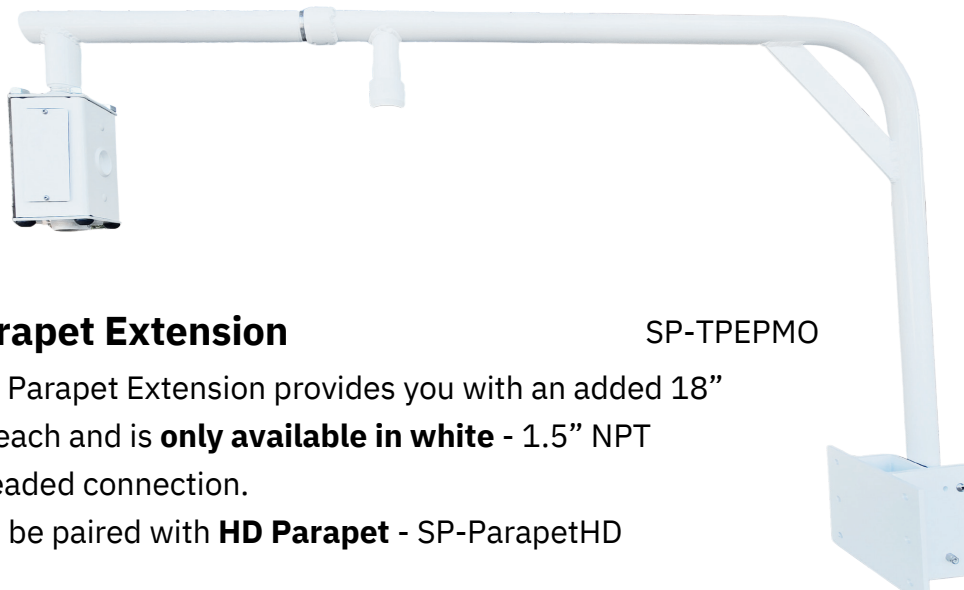
## StrongMount-2016

StrongMount-2016

20x16x8 Nema/UL 6P (IP68) Impact and Sun Resistant Polycarbonate Enclosure



## HD Parapet with Extension and Junction Box

**Parapet Extension**

SP-TPEPMO

The Parapet Extension provides you with an added 18" of reach and is **only available in white** - 1.5" NPT threaded connection.

Can be paired with **HD Parapet** - SP-ParapetHD

**Twin PTZ Adapter**

SP-TPA

Twin PTZ Adapter 18" long adapter that will connect to any accessory with a 1.5" NPT allowing two PTZs to be attached.

**4" Top Tenon Mount**

SP-4SPV

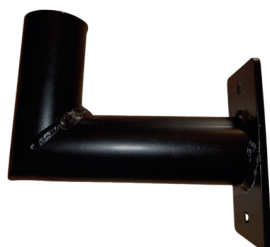
4" Top Tenon mount is designed for easy installation on 4" round poles. It provides a secure and stable connection for your lighting fixtures, ensuring they stay firmly in place.

**Horizontal Tenon Mount**

SP-TenonH

6" Horizontal Tenon that can be mounted directly to the Strong Poles Tenon Mounting Platform. Tenons mounts are all 2 3/8" and any combination of up to four of the horizontal or vertical tenons can be mounted on one Tenon Mounting Pedestal.

*Standard Side Mounting Plate*

**Vertical Tenon Mount**

SP-TenonV

4" Vertical Tenon that can be mounted directly to the Strong Poles Tenon Mounting Platform. Tenons mounts are all 2 3/8" and any combination of up to four of the horizontal or vertical tenons can be mounted on one Tenon Mounting Pedestal.

*Standard Side Mounting Plate*

**HD Parapet Tenon Mount**

SP-ParapetHDTenon

4" Tenon mount adapters are helpful tools when you need to install your light or security camera onto a Parapet PTZ Camera mount, wall, or other surface. 1.5" NPT threaded connection.

SP-AngAdjAntMount



## Angle Adjustable Antenna Mount

Angle Adjustable Antenna Mount for outdoor eaves and/or walls mounting.

1.5" NPT Threaded Pipe

**Available in White Only**

SP-AngAdjAntMountHD



## Heavy Duty Angle Adjustable Antenna Mount

Angle Adjustable Antenna Mount for outdoor eaves and/or walls mounting.

1.5" NPT Threaded Pipe

**Available in White Only**



## Aluminum Equipment Cabinet-Small

SP-AECSmall

Aluminum vent enclosure, vent screen and mounting back-plate measure 16" width, 20.5" height, and 10" depth with then in. Inside dimensions of 16" width, 16" height, 10" depth.



## Aluminum Equipment Cabinet-Large

SP-AECLarge

Aluminum vent enclosure, vent screen and mounting back-plate measure 18" width, 22.5" height, and 18" depth with an inside dimension of 18" width, 18" height, and 18" depth.



## 6" Band Mount

SP-BandMount6

The SP-BandMount6 works with our 12ft and 16ft **SteadyMax** Poles



## 8" Band Mount

SP-BandMount8

The SP-BandMount8 works with our 20ft and 25ft **SteadyMax** poles





## Square U-Bolts

Square U-Bolts, washers and nuts for 4" Poles

SP-SquareUWN4"



## Square U-Bolts

Square U-Bolts, washers and nuts for 5" Poles

SP-SquareUWN5"



## Round U-Bolts

Round U-Bolts, washers and nuts for 6"-6.5" Poles

SP-RoundUWN6.5"



## 1.5" Coupler

1.5" to 1.5" double aluminum pipe coupler w/ 2 set screws  
1.5" NPT threaded connection

SP-1.5Coupler

Available in White or Dark Bronze/Black

## REDUCERS

Polypropylene Male Reducers Schedule 80 (Blk)



SP-Reducer - 3/4" to 1/2"



SP-Reducer - 1.5" to 1"



SP-Reducer - 1.5" to 3/4" to 1/2"



SP-Reducer - 1.5" to 1" to 1/2"



SP-Reducer - 1.5" to 3/4"

## BUSHINGS

Polypropylene Reducing Bushings Schedule 80 (Blk)



SP-Bushing-3/4"M x 1/2"F



SP-Bushing-1.5"M x 1"F



SP-Bushing-1.5"M x 3/4"F

## NIPPLES

Polypropylene Male Nipples Schedule 80 (Blk)



SP-Nipple-1/2"



SP-Nipple-1"



SP-Nipple-3/4"



SP-Nipple-1.5"x1"



SP-Nipple-1"x1/2"



SP-Nipple-3/4"x1/2"





# Keypad & Reader Pedestals





## Direct-Bury Gooseneck Keypad Pedestal

SP-DBP66

66" height total made from 1.5" tubing so 2' can be buried and 42" left above ground

**Available in Hammered Black Only**



## Gooseneck Pedestal - 48

SP-PMP48

Pad Mounted 48" Model made from 1.5" tubing

**Available in Hammered Black Only**



## Gooseneck Pedestal - 42

SP-PMP42

Pad Mounted 42" Model made from 1.5" tubing

**Available in Hammered Black Only**



## Gooseneck Pedestal - 36

SP-CMP36

Curb Mounted 36" Model made from 1.5" tubing

**Available in Hammered Black Only**



## Keypad Pedestal w/ Over Watch Camera

SP-KPOWC

Built for durability and designed for smart access control, this rugged stanchion system delivers everything you need for secure entry points, all in one constructed package.

Standard with Camera: Comes equipped with the EnviroCams Micron-IR Pocket Dome 4K IP Security Camera for crystal-clear monitoring. Also available w/o camera.

SP-KPCS

**Available in Hammered Black Only**



## Dual Height Pad Mounted Pedestal

SP-DualHeavyP

For Cars & Big Trucks - made from 3" square with lower face at 42" and upper face at 72"

**Available in Hammered Black Only**



## HD Architectural Keypad Pedestal

SP-PM484

Heavy-Duty 48" height with faceplate at 42", made from 4" square aluminum with Pyramid top cap or Flat aluminum top cap.

**Available in Hammered Black Only**

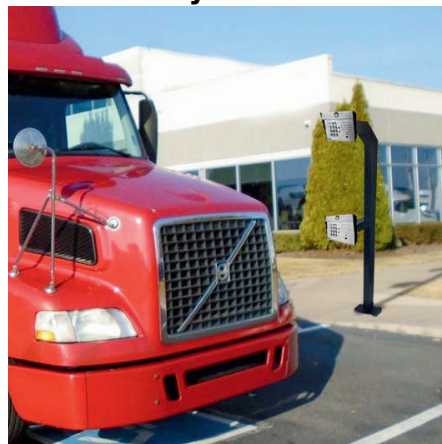


## Touchless Card Reader Pedestal

SP-CRPM48

48" height made from 4" square aluminum with aluminum with Pyramid top cap or Flat aluminum top cap options.

**Available in Hammered Black Only**







# LED Lighting

for parking lots & other outdoor areas



SP-X80/100/120/150W



**SWITCHABLE - LED Area Light-80/100/120/150W**

Switchable LED Light with Type III lens, 4000 - 5000K Color Temp (Daylight), 2-3/8" Tenon Slip-fit Mounts, Accept any Voltage from 120-277V AC

SP-X240/260/280/310W



**SWITCHABLE - LED Area Light-240/260/280/310W**

Switchable LED Light with Type III lens, 4000 - 5000K Color Temp (Daylight), 2-3/8" Tenon Slip-fit Mounts, Accept any Voltage from 120-277V AC



**LED Area Light Photocell**

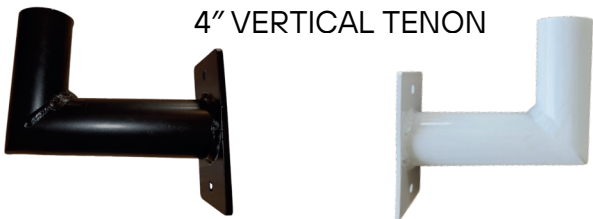
SP-XPC

Photocell for all SP-X LED lights

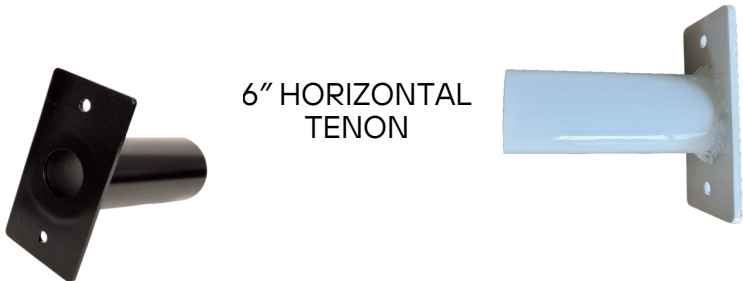
Input voltage	Power	CCT	Lens	Sensor	Arm
<b>HV</b>	<b>320W</b>	<b>40K</b>	<b>YYY</b>	<b>Z</b>	<b>R</b>
Blank AC120-277V/	80W	40K 4000K	III Type III	D With	S Slip Fitter Arm
HL AC120-347V	100W	50K 5000K	V Type V	N Without	E Extruded Arm
HV 277-480V	150W	57K 5700K	90 90°		M Surface mount
	250W				F Slip Fitter+Extruded Arm
	320W				

**TENON MOUNTS**

4" VERTICAL TENON



6" HORIZONTAL TENON



Check out the Tenons on page 27 — perfect for pairing with our SteadyMax poles and Junction Box.







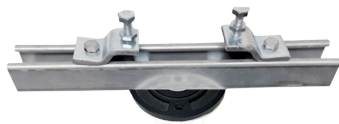
# Indoor Mounting



## Beam Clamp with Egyptian Pipe Hanger

IMS-BCE

Beam Clamp with the “Egyptian” threaded ceiling mount pipe drop adapter



## Beam Clamp with Round Pendant Pipe Hanger

IMS-BCPM

Beam Clamp with Round Pendant Pipe Hanger



## Pipe Clamp with Egyptian Pipe Hanger

IMS-PCE

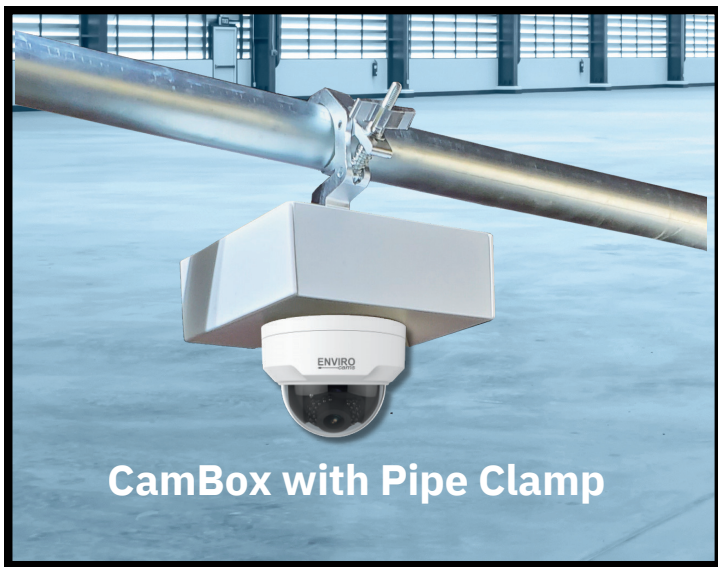
Pipe Clamp with the “Egyptian” threaded ceiling mount pipe drop adapter



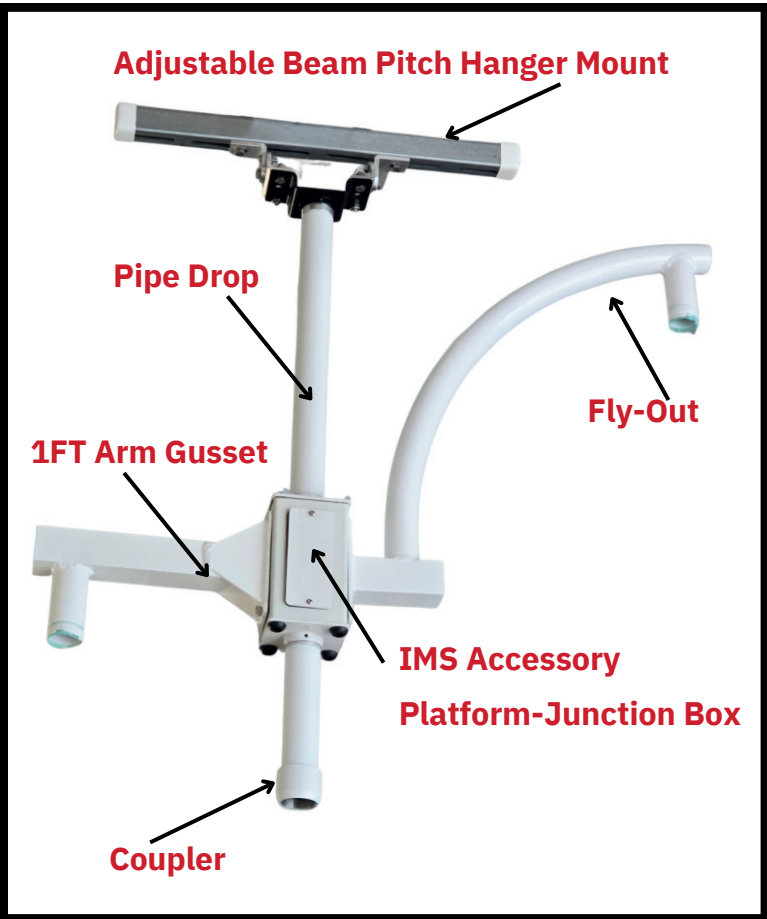
## Round Pendant Pipe Hanger with concrete anchors

IMS-PM

Round Pendant Pipe Hanger w/ concrete anchors. 1.5” NPT threaded connection



CamBox with Pipe Clamp







## 8" Pipe Drop

IMS-PD8in

8 inch long 1.5" NPT Threaded Pipe Drop with PTZ Collar  
Can be attached to any of the Egyptian or Round Pendant pipe hangers or any accessory with a 1.5" NPT fitting.



## 19.5" Pipe Drop

IMS-PD19in

19.5 inch long 1.5" NPT Threaded Pipe Drop with PTZ Collar  
Can be attached to any of the Egyptian or Round Pendant pipe hangers or any accessory with a 1.5" NPT fitting.



## 4' Pipe Drop

IMS-PD4ft

4 ft. 1.5" NPT Threaded Pipe Drop with PTZ Collar  
Can be attached to any of the Egyptian or Round Pendant pipe hangers or any accessory with a 1.5" NPT fitting.



## 6' Pipe Drop

IMS-PD6ft

6 ft. 1.5" NPT Threaded Pipe Drop with PTZ Collar  
Can be attached to any of the Egyptian or Round Pendant pipe hangers or any accessory with a 1.5" NPT fitting.



## 8' Pipe Drop

IMS-PD8ft

8 ft. 1.5" NPT Threaded Pipe Drop with PTZ Collar  
Can be attached to any of the Egyptian or Round Pendant pipe hangers or any accessory with a 1.5" NPT fitting.



## 10' Pipe Drop

IMS-PD10ft

10 ft. 1.5" NPT Threaded Pipe Drop with PTZ Collar  
Can be attached to any of the Egyptian or Round Pendant pipe hangers or any accessory with a 1.5" NPT fitting.

**Available in  
White & Black**





## IMS Junction Assembly

IMS-J1TFB

4"x 4"x7" Junction with threaded top and solid bottom plate and one 2"x 4.5" access / hand hole opening with gasket and cover.

1.5" NPT threaded connection



## IMS Junction In-Line Assembly

IMS-J2T

4"x 4"x7" Junction with threaded top and Bottom and one 2"x4.5" access / hand hole opening with gasket and cover.

1.5" NPT threaded connection



## IMS Accessory Platform

IMS-MAP1TFB

4"x 4"x7" Accessory Mounting Platform with threaded top and solid bottom plate.

Standard Side Mounting Plate Configuration on all four sides

1.5" NPT threaded connection



## IMS In-Line Accessory Platform

IMS-MAP2T

4"x 4"x7" Accessory Mounting Platform with Threaded top and bottom plate. Standard Side Mounting Plate Configuration on all four sides.

1.5" NPT threaded connection



## 6x8 Multi-Purpose Box

IMS-MP68

Multi-Purpose 6"x8" double threaded box with 2"x 4.5" access hand hole and 3 accessory attachment holes.

1.5" NPT threaded connection



## 8x10 Multi-Purpose Box

IMS-MP810

Multi-Purpose 8"x10" double threaded open box with 4 accessories attachment holes.

1.5" NPT threaded connection





## 16" StrongStrut - Band Clamp

IMS-16long3/8B

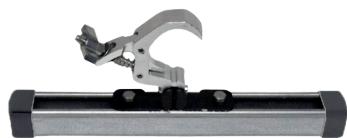
16" long Strong Strut with stainless steel band and end caps



## 8" StrongStrut - Band Clamp

IMS-8long3/8B

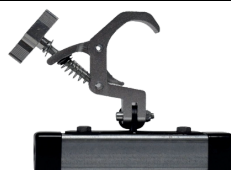
8" long Strong Strut with stainless steel band and end caps



## 16" StrongStrut - Pipe Clamp

IMS-16long3/8H

16" long Strong Strut with pipe clamp and end caps



## 8" StrongStrut - Pipe Clamp

IMS-8long3/8H

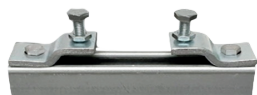
8" long Strong Strut with pipe clamp and end caps



## 16" StrongStrut - Z Clamp

IMS-16long3/8BCM

16" long Strong Strut with Z clamps and end caps



## 8" StrongStrut - Z Clamp

IMS-8long3/8BCM

8" long Strong Strut with Z clamps



## 16" StrongStrut - Egyptian

IMS-16long3/8E

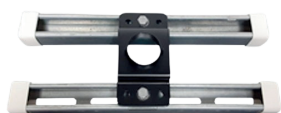
16" long Strong Strut with the "Egyptian" threaded ceiling mount and end caps



## 8" StrongStrut - Egyptian

IMS-8long3/8E

8" long Strong Strut with Egyptian mount and end caps



## 2x 16" StrongStrut - Egyptian

IMS-16long3/8ED

Two 16" long Strong Struts with the "Egyptian" threaded ceiling mount and end caps



## 2x 8" StrongStrut - Egyptian

IMS-8long3/8ED

Two 8" long Strong Struts with the "Egyptian" threaded ceiling mount and end caps



## Adjustable Beam Pitch Hanger Mount-Egyptian

SP-AdjBPHMount

This Beam Clamp assemble is 24" wide and will accommodate a beam up to 18" wide.

**\*End Caps Available in Black or White**



***HD Parapet***  
with Junction Box  
Parapet Extension  
Twin PTZ Adapter

*Steady**Max** poles are designed to provide a stable and secure mounting platform for your security cameras, ensuring they stay in place even during the most severe weather conditions.*

**WHEN THE WINDS ROAR  
STRONG POLES  
ENDURES**







# Need Expert Advice for Your Project?

Ask Our Design Specialists!



Not sure how to accomplish your current project goals? Let our design specialists at **StrongPoles** help you determine exactly what you need. Whether it's choosing the right mounting solutions or understanding specific product features, we're here to guide you every step of the way.

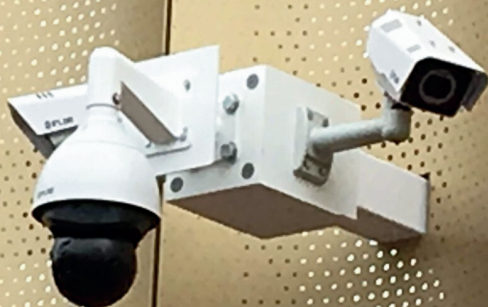


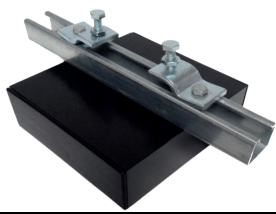
## Contact us today to ensure your project is a success!



**844-669-3537**

[www.StrongPoles.com](http://www.StrongPoles.com)

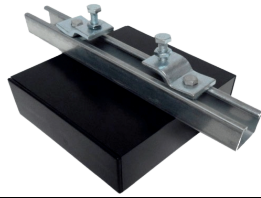




### 8" CamBlox - Z Clamps

8" CamBlox with 14" Strong Strut and Z clamps

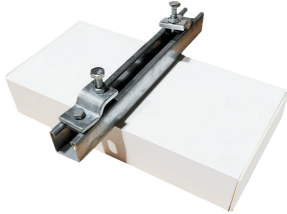
IMS-CBBCMS



### 12" CamBlox - Z Clamps

12" CamBlox with 14" Strong Strut and Z clamps

IMS-CBBCMD



### 16" CamBlox - Z Clamps

16" CamBlox with 14" Strong Strut and Z clamps

IMS-CBBCMT



### 8" CamBlox - Pipe Clamp

8" CamBlox with pipe clamp

IMS-CBPCMS



### 12" CamBlox - Pipe Clamp

12" CamBlox with pipe clamp

IMS-CBPCMD



### 16" CamBlox - Pipe clamp

16" CamBlox with pipe clamp

IMS-CBPCMT



### 8" CamBlox - Pendant

8" CamBlox with pendant mount  
1.5" NPT threaded connection

IMS-CBPMS



### 12" CamBlox - Pendant

12" CamBlox with pendant mount  
1.5" NPT threaded connection

IMS-CBPMD



### 16" CamBlox - Pendant

16" CamBlox with pendant mount  
1.5" NPT threaded connection

IMS-CBPMT

**\*CamBlox - Pendant Available in Black and White**



IMS-SSS

**10' StrongStrut - Short Slots**

10 ft. stick of 1-5/8" Channel Strong Strut w/ Short Slots

**14" StrongStrut - Short Slots**

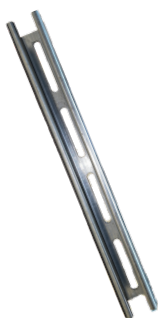
14" piece of 1-5/8" Channel Strong Strut w/ Short Slots

IMS-SSS-14

**10' StrongStrut - Long Slots**

10' stick of 1-5/8" Channel Strong Strut w/ Long Slots

IMS-SSL

**16" StrongStrut - Long Slots**

16" piece of 1-5/8" Channel Strong Strut w/ Long Slots

IMS-SSL-16

**8" StrongStrut - Long Slots**

8" piece of 1-5/8" Channel Strong Strut w/ Long Slots

IMS-SSL-8



## Worm-gear Mounting Bands

100-200mm stainless steel bands

IMS-SSBands

## Worm-gear Mounting Bands

100-300mm stainless steel bands

IMS-SSBandsXL



## Threaded Ceiling Mount Adapter

IMS-E

The “Egyptian” threaded ceiling mount adapter with set screws allows you to mount equipment from ceilings using a pipe drop system.

**Available only in Black**



## Pipe Clamp

IMS-PC

Pipe clamp with bracket at bottom



## Z Clamp

IMS-Z

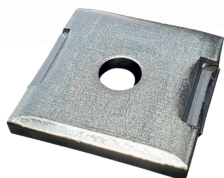
Z clamps



## StrongStrut Nut

IMS-SS38nut

3/8” Strong Strut nut without spring



## StrongStrut Washer

IMS-SS38SqW

Square Strong Strut washer for 3/8” HDW w/Channel guide



## StrongStrut Cap

IMS-SSCap

Plastic End Cap for 1-5/8” Strong Strut  
**Available in White and Black**

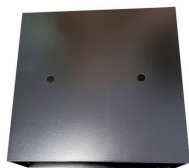


## StrongStrut Mounting Bolt

IMS-SS38Bolt

3/8” bolt used to mount things to Strong Strut

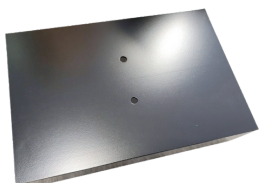




### CamBlox

CamBlox Single Body (8"x8"x3")

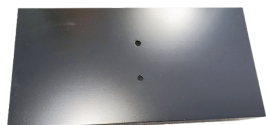
IMS-CBS



### CamBlox

CamBlox Double Body (8"x12"x3")

IMS-CBD



### CamBlox

CamBlox Triple Body (8"x16"x3")

IMS-CBT



### CamBlox Cap

CamBlox Caps (priced individually)

IMS-CBCap



### MAP & Junction Box Solid Plate

Junction & MAP Full bottom plate with 4 holes

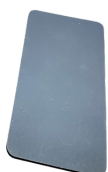
IMS-JMAPBP



### Hand Hole Cover

Junction Hand Hole Cover with 2 screws

IMS-JHHC



### Hand Hole Gasket

Junction Hand Hole black foam gasket

IMS-JHHG



### MAP & Junction Box Threaded

Junction & MAP Top Plate with 1.5" NPT threaded center hole and 2 set screws

IMS-JMAPTPP



### 4x4 Gasket

Junction & MAP 4"x4" black foam gasket with 4 corner holes

IMS-JMAPTPG



**Multi-Purpose Hand Hole Gasket** IMS-MP68Gasket  
MP68 Hand Hole gasket



**Multi-Purpose Hand Hole Cover** IMS-MP68HHC  
MP68 Hand Hole Cover with 2 screws



**MAP 1.5 inch Cap** IMS-MAPCap  
MAP 1.5 inch cap to cover main holes - Birdhouse plugs



**MAP Small Caps** IMS-MAPCapTiny  
MAP cap for tiny holes on each side



**8x10 Birdhouse Main Hole Caps** IMS-MP810Cap  
MP810 1.5 inch cap to cover main holes - Birdhouse plugs



**6x8 Multi-Purpose Box Main** IMS-MP68Caps  
MP68 1-1/8 inch caps to cover main holes



**5/8-11 x 1 Torx Screw** IMS-JMAPTORX  
Junction & MAP 5/8-11 X 1 BH TORX SCREW ALLOY STANDARDIZE



**CamBlox glands** IMS-CBGlands  
CamBlox glands

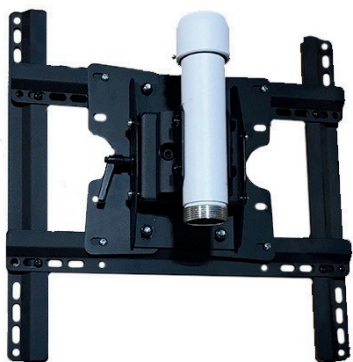


**CamBlox - StrongStrut Hardware** IMS-CBSSHHardware  
CamBlox Strong Strut hardware pack



**CamBlox - Pipe Clamp Hardware** IMS-CBPCHardware  
CamBlox Pipe Clamp hardware pack





### TV Mount

TV Mount with 8" Pendant Drop and Threaded Collar

IMS-TV



### Dual TV Mount

Two TV Mounts with 8" Pendant Drop and Threaded Collar

IMS-TV2



### TV Mount

TV mount

IMS-TVMount



### TV Mount Bolts

Bolts to attach TV Mount  
Grade5 HHCS Bolts 5/16-18 x 3  
5/16" - 18 Nylon Lock Nuts  
5/16" Standard Flat Washers

IMS-TVMountBolts

# FOUNDATION RECOMMENDATIONS

### NOTE:

- Never go below the minimums, but if your Foundation Engineer designs a foundation that is a greater diameter or deeper depth, please follow the Engineer's specifications.
- If using a Concrete Form (tube), backfill with concrete between the form and undisturbed soil. This may be performed before or after filling the tube with concrete. The last foot of depth may be filled with soil and compacted.
- Your concrete can rise above ground level a maximum of 2 feet and still maintain our designed stability (common practice in parking lots and other areas where vehicles may impact a pole).
- If constructing your foundation near high vibration areas (such as next to railroad tracks), always go larger and deeper than the minimums.

### Direct Bury Type Poles:

Each StrongPole Direct Bury Pole is clearly marked at the Factory for correct bury depth. When installing a Direct Bury Pole, DO NOT back-fill with soil, as this will not be as stable as it needs to be. Pour concrete to fill the area between the pole and the undisturbed soil. The last foot of depth may be filled with soil and compacted.

If using a Concrete form, after filling the form around the pole with concrete, fill outside the form with concrete as well instead of back-filling dirt around the form. The last foot of depth outside the form may be filled with soil and compacted.

### *Expanding foam concrete not recommended or approved!*

We have had several reports of the expanding foam concrete material shrinking back from the pole and sides of the hole. This makes for a very unstable and shaky foundation. If you insist on using this method, please test the foam before installation of your pole. We have not yet found a foam that does not shrink back. If you find a product that performs well we would love to know about it. Good luck!

### Mounting a Pole to a Parking Garage Deck:

This is not recommended, and your installation may not have the same rigidity or strength as a foundation that is correctly built. If you are forced to mount a **StrongPole** this way, make sure the concrete deck is at least 10" thick, and use anchors that are at least ½" diameter, and at least 6" long.

### Mounting to a Dock or Pier:

This is not recommended at all, and could result in less stability and more shake than desired. No Pole over 12 ft should be mounted to a dock or pier.

If the dock you will be mounting to is concrete, then the minimums listed above for garage decks should be followed. Any thinner should be bolted instead of anchored, with a steel plate (at least twice as large as the base, and a minimum of ¼" thick), should be used below the deck/dock.

If the pier or dock is wood, then bolt the pole with a steel plate below the dock/deck (at least twice the diameter of the pole base, and at least ¼" thick).

Concrete Foundation Mount Minimum Foundation Diameter and Depths

Model	Pole Height	Most Hard Clay Soils	Most Sandy Soils
SP-SM12FL	12 ft	18" Diameter   4 ft Deep	24" Diameter   5 ft Deep
SP-SM16	16 ft	18" Diameter   4 ft Deep	24" Diameter   5 ft Deep
SP-SM20	20 ft	24" Diameter   5 ft Deep	30" Diameter   6 ft Deep
SP-SM25	25 ft	24" Diameter   5 ft Deep	30" Diameter   6 ft Deep
SP-SM30	30 ft	24" Diameter   5 ft Deep	30" Diameter   6 ft Deep





### ***Warranty***

This Warranty only covers products manufactured by Strong Poles and does not cover any products manufactured by others. These products carry their own warranties and should be considered before returning any products. Strong Poles will not accept returned items without prior written return authorization or an authorization number.

For any breach by Strong Poles of this limited warranty, the exclusive remedy of the Customer and the sole liability of Strong Poles shall be, at the option of Strong Poles, to replace or repair the affected products, or to refund to the Customer the price of the affected products. The availability of replacement products is subject to product discontinuance policies at Strong Poles. All Strong Poles are warranted for a period of twenty (20) years from the date of purchase to the original buyer with proof of purchase. This warranty does not cover the costs of removing and re-installing the accessories. All warranties are limited to replacement and/or repair. This warranty does not cover acts of nature such as lightning damage and failures or corrosion due to improper installation, misapplication (product used outside of specified use), damage from handling, transportation, installation, vehicular impact, abuse, or vandalism, site-specific wind-induced or other vibration, or improper grounding. This warranty does not include reimbursement for the expense of installation or removal of equipment, transportation, or any other expenses which may be incurred. This warranty applies to the pole assembly only and does not include anchor bolts, connecting hardware, or foundation. Authorization must be obtained from Strong Poles before any material is returned. This warranty excludes finishes such as powder coating and anodizing.

### ***Paint Finish Warranty:***

Strong Poles warrants its factory-applied powder coatings against cracking, peeling, or excessive fading due to normal climatic exposure for a period of five (5) years from the date of shipment. Damage to the finish coating caused by mechanical abuse, such as rough handling during installation or vandalism, is not covered by this warranty. This warranty is limited to the repair or replacement of the material involved and does not include reimbursement of consequential expenses such as installation or removal of equipment or transportation costs.

### ***Bolt-on Platforms and Attachments Warranty:***

Strong Poles warrants all of our add-on platforms and attachments for a period of one (1) year from the date of shipment. Damage caused by mechanical abuse, such as rough handling during installation or vandalism, is not covered by this warranty. This warranty is limited to the repair or replacement of the platform or attachments involved and does not include reimbursement of consequential expenses such as installation or removal of equipment or transportation costs.



For more details about our custom solutions, please  
feel free to reach out to us directly. We're here to  
help you find the best mounting options for  
your needs!

**STRONGPOLES**  
SECURITY MOUNTING SOLUTIONS

(Place Business Card Here)