



**Don't Settle for less.
Choose the best.**

Home of SteadyMax - The Most Rigid Pole in The World



STEADYMAX
FLORIDA POLE

**Designed to withstand
195 MPH winds!**

**Don't Settle for a repurposed light pole.
Choose the engineered solution.**

StrongPoles.com / 844-669-3537

3% MOVEMENT

SteadyMax security poles are engineered from 6063-T6 structural aluminum and designed to exceed Florida Building Code 2017 wind-speed requirements (150–195 MPH) and AASHTO 2013/2015 structural standards. Every model—from the compact 12' to the towering 30'—delivers exceptional rigidity, showing less than 3% movement even under extreme wind loads.

All **SteadyMax** poles include a factory-installed dual-frequency Vibration Suppression System, using internal impact-style dampers that control both high- and low-frequency oscillations. This ensures stable video, accurate analytics, and long-term structural performance across the entire product line.

Construction & Design

- **Material:** 6063-T6 aluminum, corrosion-resistant, lightweight, and structurally rigid.
- **Wall Thickness:** Heavy-wall construction (.156" - .250")
- **Finish Options:**
 - White powder-coat
 - Black (Dark Bronze) powder-coat
- **Hand Holes:**
 - Standard lower hand hole near the base (18–21").
 - Upper hand hole positioned 4–5 ft from the top
 - Extra handhole = 2" x 4" hand hole with 3" x 5" cover.
- **Dampers:**
 - (2) internal impact-style dampers installed in every model.

Model Structure

12' & 16' Models

- Non-tapered heavy-wall construction.
- Designed for maximum rigidity in compact installations.

20', 25', & 30' Models

- Round-tapered design: approx. 8" OD at base → 6" OD at top.
- Heavy-wall (.156" - .250") for high-wind and high-load environments.
- Lightweight for their class:
 - 12' — 62lbs
 - 16' — 65lbs
 - 20' — 89 lbs
 - 25' — 154 lbs
 - 30' — 235 lbs

Performance Advantages

- Exceeds FBC 2017 wind-speed requirements (150–195 MPH depending on model).
- Meets AASHTO 2013 & 2015 LRFD structural standards.
- Superior rigidity-to-weight ratio compared to standard light poles and generic steel poles.
- Reduced vibration protects camera clarity, analytics accuracy, and long-term equipment life.
- Lightweight for easier installation, transport, and handling.

Applications

SteadyMax poles are purpose-built for:

- Security cameras (PTZ, multi-sensor, LPR)
- Radar and LiDAR sensors
- Perimeter protection systems
- Parking lots, campuses, utilities, industrial sites
- High-wind coastal or hurricane-prone regions

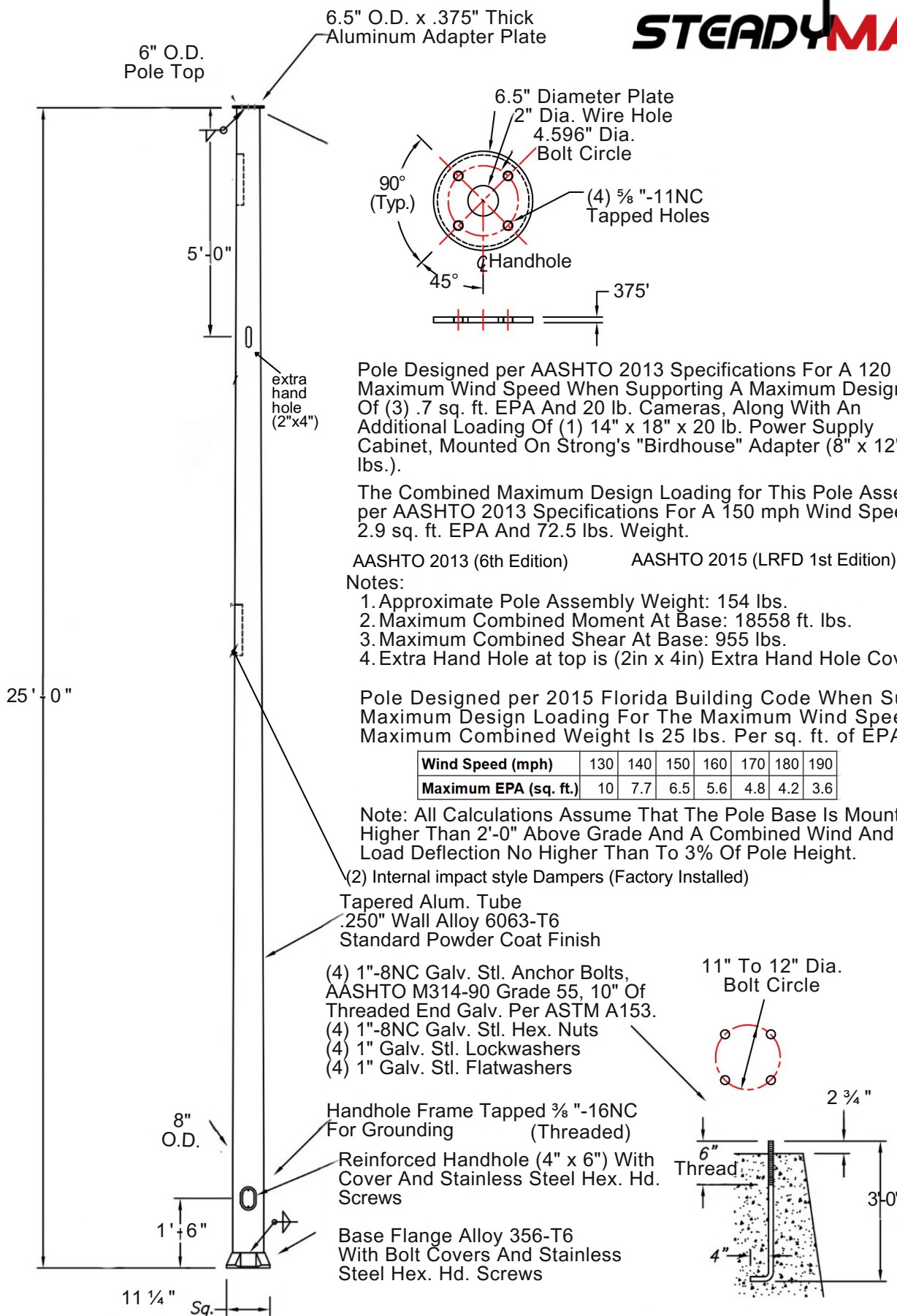
Available Heights & Part Numbers

- 12' SteadyMax — SP-SM12XH
- 16' SteadyMax — SP-SM16XH
- 20' SteadyMax — SP-SM20XH
- 25' SteadyMax — SP-SM25XH
- 30' SteadyMax — SP-SM30XH

		EPA Wind Velocity (mph)									
Model	Height	90 mph	100 mph	120 mph	130 mph	140 mph	150 mph	160 mph	170 mph	180 mph	190 mph
SP-SM12FL	12 ft	17.4	13.5	8.89	18.1	15.4	13.3	11.1	10.1	8.9	8.1
SP-SM16	16 ft	14.5	11	6.8	7.4	5.8	5	4.3	3.7	3.2	2.8
SP-SM20	20 ft	14.2	10.5	5.7	10.9	8.7	7.4	6.4	5.5	4.9	4.2
SP-SM25	25 ft	12.6	9.1	4.3	10	7.7	6.5	5.6	4.8	4.2	3.6
SP-SM30	30 ft	10.8	7.8	3.6	4.7	3.9	3.3	2.7	2.3	1.9	1.5

THE TABLE ABOVE SHOWS THE EFFECTIVE PROJECTED AREA (EPA) WIND VELOCITY RATINGS FOR DIFFERENT STRONGPOLES MODELS AT VARIOUS WIND SPEEDS. THE VALUES REPRESENT THE MAXIMUM WIND SPEED (IN MPH) THAT EACH MODEL, CAN WITHSTAND, WHILE MAINTAINING OUR MAXIMUM AVAILABLE MOVEMENT CONSIDERING A GUST FACTOR OF 1.3. THIS GUST FACTOR ACCOUNTS FOR SUDDEN INCREASES IN WIND SPEED, ENSURING THE POLES CAN HANDLE SHORT BURSTS OF HIGHER WIND SPEEDS WITHOUT COMPROMISING STABILITY.

The 25' SteadyMax Camera Pole is a round tapered pole, and is approximately 8" O.D. at the bottom, and tapers up to 6" O.D.

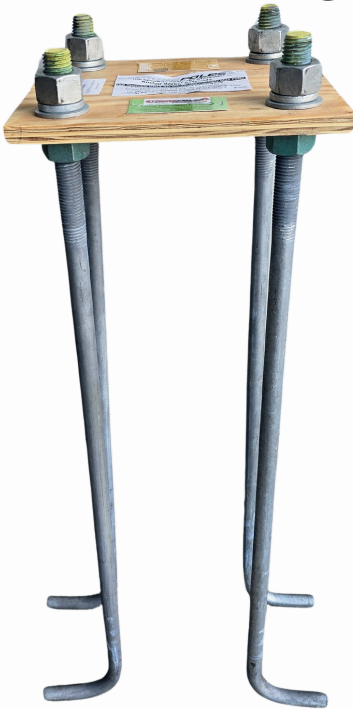




STRONGPOLES

SECURITY MOUNTING SOLUTIONS

SteadyMax 20/25/30 Anchor Basket Assembly



Strong Poles' pre-engineered Anchor Baskets makes installations much faster, and alignment much easier. Simply push the Anchor Basket down into the wet concrete until the template is flush with the top of the concrete, and be sure that the conduit rises well above the hole in the template. Then before the concrete is cured, Remove the template and make sure foundation is level and smooth to mount the pole.

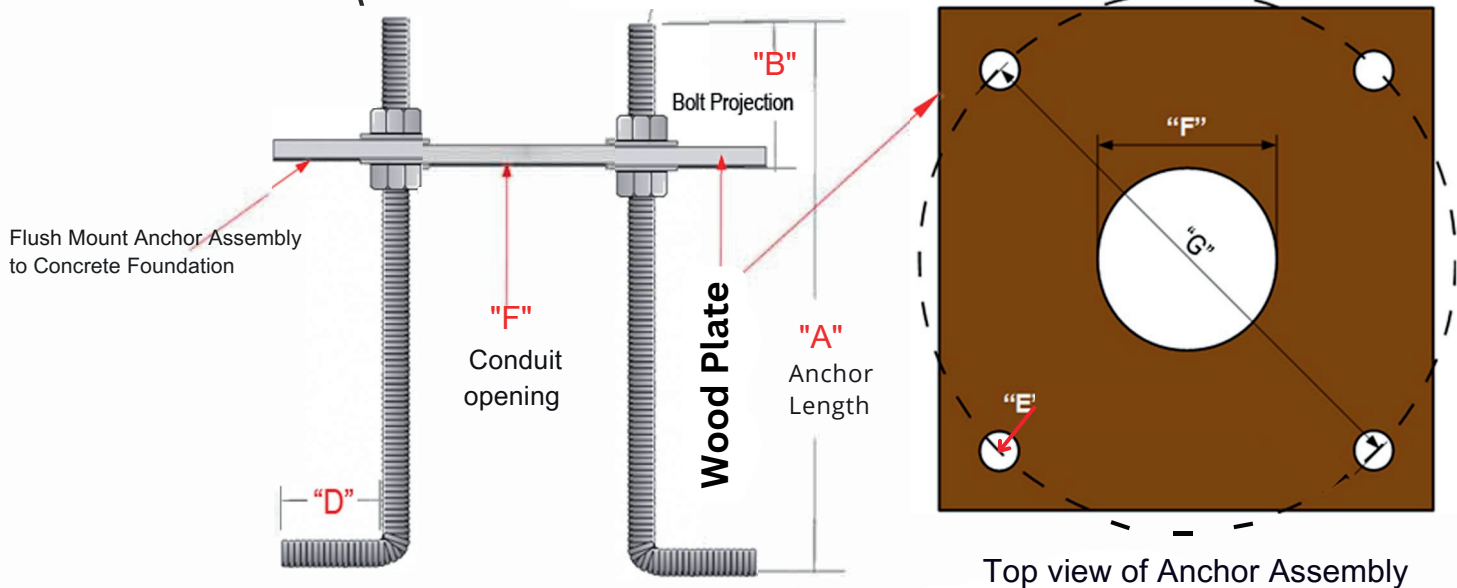
Strong Poles pre-sets each lug to the perfect height for mounting so the lugs do not sit up too high to get the base cover in place correctly.

Each Anchor Basket has been preset to have a projection of the bolts above the concrete at the perfect height to allow the finish caps to fit onto the pole base.

NOTE: Please do not use a twin nut leveling system, (commonly found on light poles). Our Poles must be fastened directly to the concrete. Then before the concrete is cured, Remove the template and make sure foundation is level and smooth to mount the pole

"C"

(1") Bolt Diameter



POLE SIZE	STRONGFORM	ANCHOR ASSEMBLY PART	"A" ANCHOR LENGTH	"B" BOLT PROJECTION	"C" BOLT DIAMETER	"D" ANCHOR LENGTH	"E" HOLE DIAMETER	"F" CONDUIT SIZE	"G" BCD
SteadyMax SP-SM20	StrongForm-24-5	Included	36"	2-3/4"	1"-8	4 -1/4"	1-1/16"	Max OD 5"	11.5"
SteadyMax SP-SM25	StrongForm-30-6	Included	36"	2-3/4"	1"-8	4 -1/4"	1-1/16"	Max OD 5"	11.5"
SteadyMax SP-SM30	StrongForm-30-6	Included	36"	2-3/4"	1"-8	4 -1/4"	1-1/16"	Max OD 5"	11.5"

www.strongpoles.com
844-669-3537

SECTION 28 25 00 VIDEO SURVEILLANCE POSITIONING
EQUIPMENT

Copyright 2024 - 2024 ARCAT, Inc. - All rights reserved

PART 1 GENERAL

1.1 SECTION INCLUDES

- A. Security Camera Poles:
 - 1. SteadyMax poles.
 - 2. Square, 4 inch poles.
 - 3. Square Direct Bury poles.

1.2 RELATED SECTIONS

- A. Section 03 30 00 - Cast-in-Place Concrete.
- B. Section 07 84 13 - Penetration Firestopping.
- C. Section 26 05 48 - Vibration and Seismic Controls for Electrical Systems.
- D. Section 27 05 29 - Hangers and Supports for Communications Systems.

1.3 REFERENCES

- A. American Association of State Highway and Transportation Officials (AASHTO):
 - 1. AASHTO LTS - Standard Specifications for Structural Supports for Highway Signs, Luminaires and Traffic Signals 2013 (Revised 2019).
- B. Florida Building Code 2017.
- C. Institute of Electrical and Electronics Engineers (IEEE):
 - 1. IEEE C2 - National Electrical Safety Code 2017.
- D. National Electrical Contractors Association (NECA):
 - 1. NECA 1 - Standard for Good Workmanship in Electrical Construction 2015.
 - 2. NECA 303 - Standard for Installing and Maintaining Closed-Circuit Television (CCTV) Systems 2019.
- E. National Electrical Manufacturers Association (NEMA):
 - 1. NEMA/UL Enclosure Ratings.
- F. Underwriters Laboratories (UL).

1.4 SUBMITTALS

- A. Submit under provisions of Section 01 30 00 - Administrative Requirements.
- B. Product Data:
 - 1. Manufacturer's data sheets on each product to be used.
 - 2. Preparation instructions and recommendations.
 - 3. Storage and handling requirements and recommendations.
 - 4. Typical installation methods.
- C. Verification Samples: Two representative units of each type, size, pattern and color.
- D. Shop Drawings: Include details of materials, construction and finish. Include relationship with adjacent construction.

1.5 QUALITY ASSURANCE

- A. Manufacturer Qualifications: Company specializing in manufacturing products specified in this section with a minimum five years documented experience.
- B. Installer Qualifications: Company specializing in performing Work of this section with minimum two years documented experience with projects of similar scope and complexity.
Source Limitations: Provide each type of product from a single manufacturing source to ensure uniformity.
- C. Mock-Up: Construct a mock-up with actual materials in sufficient time for Architect's review and to not delay construction progress. Locate mock-up as acceptable to Architect and provide temporary foundations and support.
- D.
 - 1. Intent of mock-up is to demonstrate quality of workmanship and visual appearance.
 - 2. If mock-up is not acceptable, rebuild mock-up until satisfactory results are achieved.
 - 3. Retain mock-up during construction as a standard for comparison with completed work.
 - 4. Do not alter or remove mock-up until work is completed or removal is authorized.

1.6 PRE-INSTALLATION CONFERENCE

- A. Convene a conference approximately two weeks before scheduled commencement of the Work. Attendees shall include Architect, Contractor and trades involved. Agenda shall include schedule, responsibilities, critical path items and approvals.

1.7 DELIVERY, STORAGE, AND HANDLING

- A. Store and handle in strict compliance with manufacturer's written instructions and recommendations.
- B. Protect from damage due to weather, excessive temperature, and construction operations.

1.8 PROJECT CONDITIONS

- A. Maintain environmental conditions (temperature, humidity, and ventilation) within limits recommended by manufacturer for optimum results. Do not install products under environmental conditions outside manufacturer's recommended limits.

1.9 WARRANTY

- A. Manufacturer's standard limited warranty unless indicated otherwise.

PART 2 PRODUCTS

2.1 MANUFACTURERS

- A. Acceptable Manufacturer: StrongPoles, which is located at:
201 N. Elm St.
Kemp, TX 75143
Toll Free Tel: 844-669-3537
Tel: 903-498-0980
Fax: 844-319-3025
Email: [request_info_\(sales@strongpoles.com\)](mailto:request_info_(sales@strongpoles.com)); Web: <https://www.strongpoles.com>
- B. Substitutions: Not permitted.
- C. Requests for substitutions will be considered in accordance with provisions of Section 01 60 00 - Product Requirements.

2.2 SECURITY CAMERA POLES

- A. Performance Requirements:
1. Standards Compliance:
 2. a. AASHTO LTS.
Wind Load: Include effective projected area (EPA) of cameras, supports, and accessories to be installed.
 - a. Design Wind Speed: 190 mph (306 kph).
 - b. Design Wind Speed: 150 mph (241 kph).
 - c. Design Wind Speed: As indicated on Drawings.
 - d. Design Wind Speed: As required by Code.
 - e. Design Wind Speed: ____ mph (____ kph).
 - f. Gust Factor: 1.3.
 3. Dead Load: Include weight of proposed cameras, supports, and accessories.
- B. General:
1. Provide poles suitable for cameras, supports, and accessories to be installed.
 2. Included Parts:
 - a. Hand hole at 18 inches (457 mm) from base.
 - b. Hand hole at 48 inches (1219 mm) from base.
 - c. Ground lug, accessible from handhole.
 - d. Top cap.
 - e. Anchor bolts with leveling nuts or leveling shims.
 - f. Anchor base cover.
 - g. Pole-top tenon, size as required for installed camera/bracket.
 - h. Cables as indicated or as required for connections between system components.
 - i. Accessory racks and cabinets as indicated or as required for equipment mounting.
 3. Mounting: Install on concrete foundation, unless otherwise indicated.
- C. Basis of Design: SteadyMax Camera Poles; as manufactured by StrongPoles, LLC.
1. Pole Configuration: As indicated on Drawings.
 2. Pole Configuration:
 - a. Shape: Round.
 - 1) Diameter: 6 inches (152 mm).
 - 2) Diameter: 8 inches (203 mm).
 - b. Tapered.
 - c. Straight, not tapered.
 - d. Height: 12 feet (3658 mm).
 - e. Height: 16 feet (4877 mm).
 - f. Height: 20 feet (6096 mm).
 - g. Height: 25 feet (7620 mm).
 - h. Height: _____.
 3. Features:
 - a. Factory installed vibration suppression system.
 - b. Maximum movement of 3 percent.
 4. Material: 6063-T6 aluminum.
 5. Finish: White powder coat.
 6. Finish: Dark bronze powder coat.
- D. Basis of Design: SteadyMaxFL Camera Poles; as manufactured by StrongPoles, LLC.
1. Standards Compliance:
 2. a. Florida Building Code 2017.
 3. Pole Configuration: As indicated on Drawings.
Pole Configuration:
 - a. Shape: Round.
 - b. Diameter: 6 inches (152 mm).
 - c. Straight, not tapered.
 - d. Height: 12 feet (3658 mm).

4. Features:
 - a. Factory installed vibration suppression system.
 - b. Maximum movement of 3 percent.
 5. Material: 6063-T6 aluminum.
 6. Finish: White powder coat.
 7. Finish: Dark bronze powder coat.
- E. Basis of Design: 4 inch Square Camera Poles; as manufactured by StrongPoles, LLC.
1. Pole Configuration: As indicated on Drawings.
 2. Pole Configuration:
 - a. Shape: Square.
 - b. Size: 4 inches (102 mm).
 - c. Straight, not tapered.
 - d. Height: 5 feet (1524 mm).
 - e. Height: 8 feet (2438 mm).
 - f. Height: 12 feet (3658 mm).
 - g. Height: _____.
 3. Mounting Base: Fixed base.
 4. Mounting Base: Tilt over base.
 5. Anchor Basket: None.
 6. Anchor Basket: Fixed anchor basket.
 7. Anchor Basket: Tilt over anchor basket.
 8. Hand Hole Cover: Blank.
 9. Hand Hole Cover: Single 1 inch (25 mm) hole.
 10. Hand Hole Cover: Two 1 inch (25 mm) holes.
 11. Material: 6005-T5 aluminum.
 12. Finish: White powder coat.
 13. Finish: Dark bronze anodized.
- F. Basis of Design: Square Direct Bury Poles; as manufactured by StrongPoles, LLC.
1. Pole Configuration: As indicated on Drawings.
 2. Pole Configuration:
 - a. Shape: Square.
 - b. Size: 4 inches (102 mm).
 - 1) Height: 12 feet (3658 mm), buried 4 feet (1219 mm).
 - 2) Height: 16 feet (4877 mm), buried 5 feet (1524 mm).
 - 3) Height: 20 feet (6096 mm), buried 5 feet (1524 mm).
 - 4) Height: _____.
 - c. Size: 5 inches (127 mm).
 - 1) Height: 8 feet (2438 mm), buried 4 feet (1219 mm).
 - 2) Height: 11 feet (3353 mm), buried 4 feet (1219 mm).
 - 3) Height: 16 feet (4877 mm), buried 5 feet (1524 mm).
 - 4) Height: 20 feet (6096 mm), buried 5 feet (1524 mm).
 - 5) Height: 25 feet (7620 mm), buried 5 feet (1524 mm).
 - 6) Height: _____.
 - d. Straight, not tapered.
 3. Material: Aluminum.
 4. Finish: White powder coat.
 5. Finish: Dark bronze powder coat.

PART 3 EXECUTION

3.1 EXAMINATION

- A. Verify that field measurements are as indicated.
- B. Verify that ratings and configurations of system components are consistent with the indicated requirements.
- C. Verify that mounting surfaces are ready to receive system components.
- D. Verify that branch circuit wiring installation is completed, tested, and ready for connection to system where applicable.
- E. Verify that conditions are satisfactory for installation prior to starting work.

3.2 PREPARATION

- A. Clean surfaces thoroughly prior to installation.
- B. Prepare surfaces using the methods recommended by the manufacturer for achieving the best result for the substrate under the project conditions.

3.3 INSTALLATION

- A. Install in accordance with manufacturer's instructions, approved submittals, and in proper relationship with adjacent construction.
- B. Install video surveillance system in accordance with NECA 1, general workmanship, and NECA 303.
- C. Provide required support and attachment in accordance with Division 26.
- D. Pole-Mounted Cameras:
 - 1. Maintain the following minimum clearances:
 - a. Comply with IEEE C2.
 - b. Comply with utility company requirements.
 - 2. Foundation-Mounted Poles:
 - a. Provide cast-in-place concrete foundations for poles as indicated; see Section 03 30 00 - Cast-in-Place Concrete.
 - 1) Install anchor bolts plumb using template furnished by pole manufacturer.
 - 2) Position conduits to enter pole shaft.
 - b. Install foundations plumb.
 - c. Install poles plumb, using leveling nuts or shims as required to adjust to plumb.
 - d. Tighten anchor bolt nuts to manufacturer's recommended torque.
 - e. Install nonshrink grout between pole anchor base and concrete foundation, leaving small channel for condensation drainage.
 - f. Install anchor base covers or anchor bolt covers as indicated.
 - 3. Embedded Poles: Install poles plumb.
- E. Provide grounding and bonding in accordance with Division 26.
- F. Install firestopping to preserve fire resistance rating of partitions and other elements, using materials and methods specified in Section 07 84 13 - Penetration Firestopping.
- G. Identify system wiring and components in accordance with Division 26.

3.4 FIELD QUALITY CONTROL

- A. Field Inspection: Coordinate field inspection in accordance with appropriate sections in Division 01.

3.5 CLEANING AND PROTECTION

- A. Clean products in accordance with the manufacturer's recommendations.
- B. Touch-up, repair or replace damaged products before Substantial Completion.

END OF SECTION